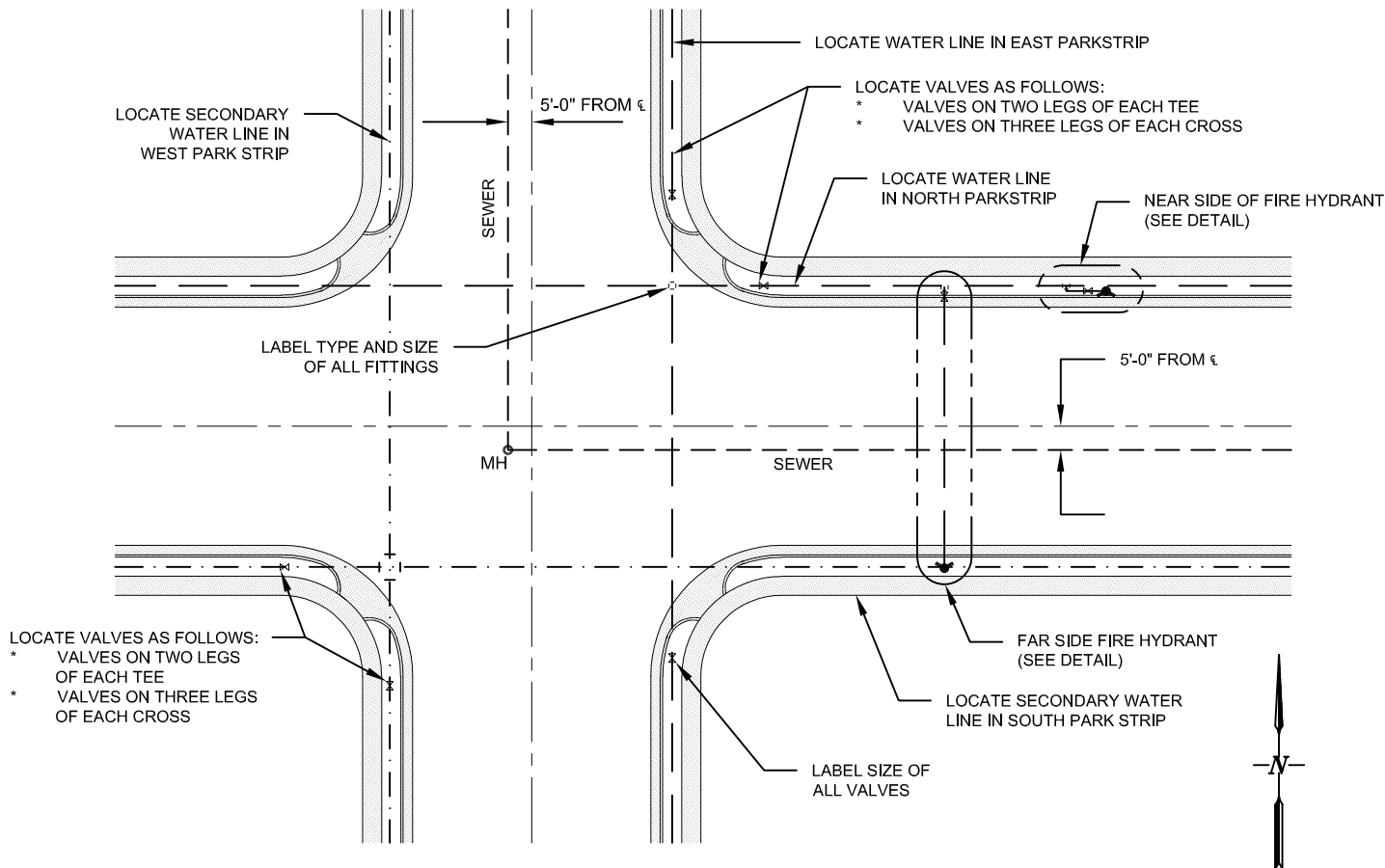
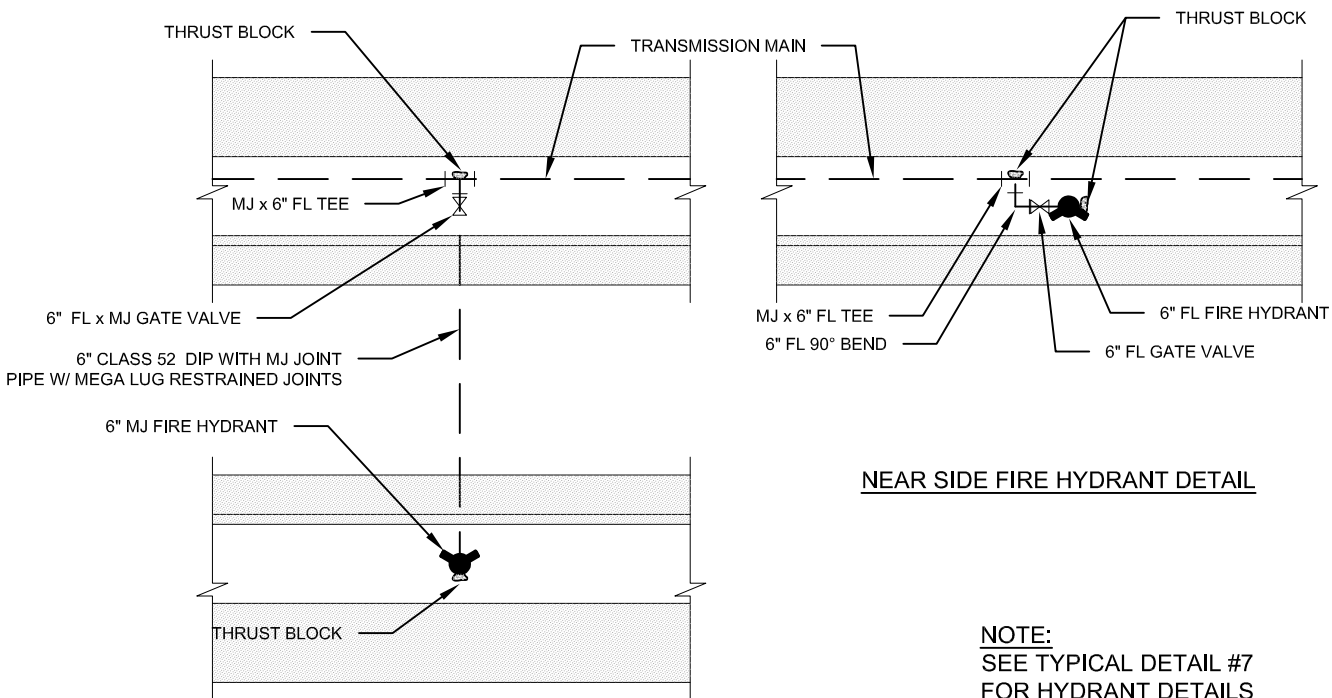


## TYPICAL DETAILS INDEX

- 1) Typical Intersection and Cul-de-sac - Pipeline Placement (1A and 1B)
- 2) Standard Manhole
- 3) Sewer Cleanout
- 4) Sewer Service Lateral
- 5) Waterline Thrust Blocking
- 6) Gate Valve
- 7) Fire Hydrant
- 8) 3/4" Water Meter Service With Setter
- 8A) 3/4" Water Meter Service Without Setter
- 9) 1" Water Meter Service
- 10) 1 1/2" and 2" Meter Vault
- 11) 3" Water Meter Vault
- 12) 4" Water Meter Vault
- 13) 8" and 10" Water Meter Vault
- 14) 6" and 8" Fire Flow Detector
- 15) Sample Vault
- 16) Oil and Grease Separator
- 17) Secondary Water Single Service Connection
- 18) Secondary Water 1 1/2" & 2" Meter Vault
- 19) Secondary Water 3", 4" or 6" Meter Vault
- 20) 4" Blow-off
- 21) 6" Blow-off
- 22) Culinary Water Air Vac Valve
- 23) Secondary Water Air Vac Valve
- 24) PRV Station
- 25) Sewer, Culinary Water, & Secondary Water Pipe Trench Cross Section
- 26) Pipeline Loop



## INTERSECTION DETAIL



**FAR SIDE FIRE HYDRANT DETAIL**

**NEAR SIDE FIRE HYDRANT DETAIL**

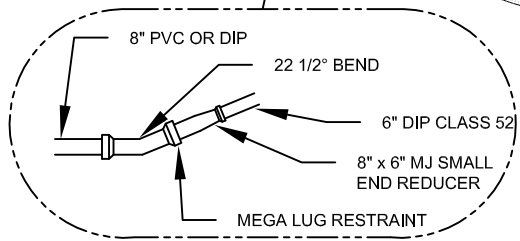
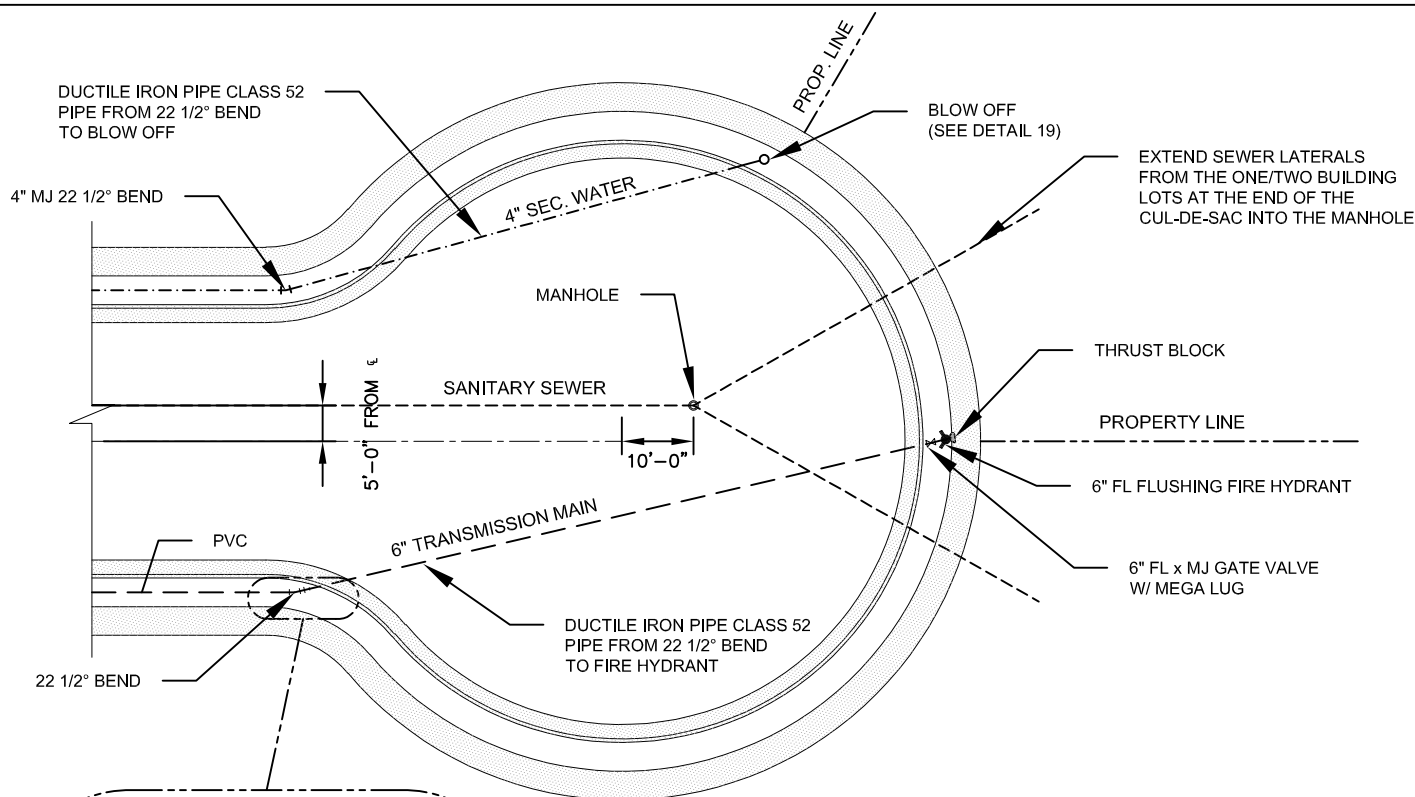
**NOTE:**  
SEE TYPICAL DETAIL #7  
FOR HYDRANT DETAILS



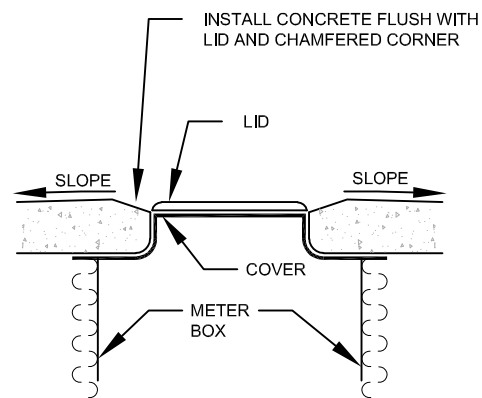
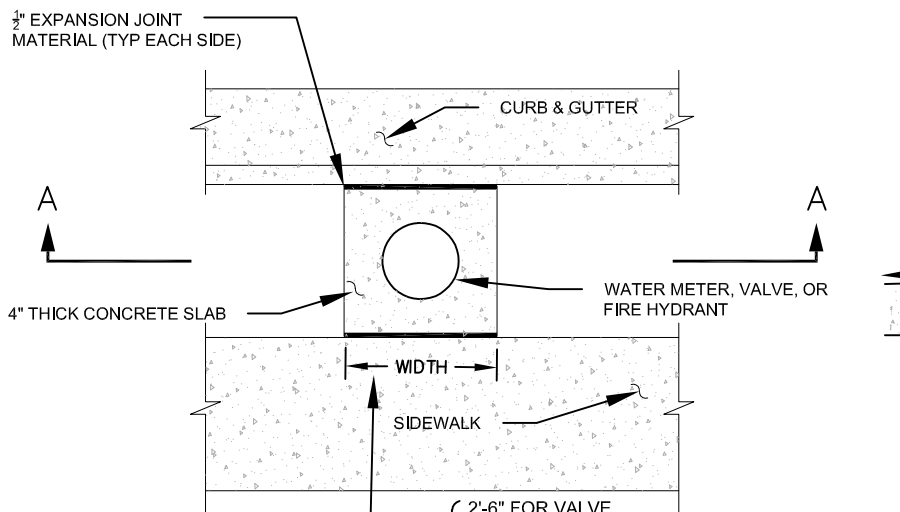
8885 WEST 3500 SOUTH  
MAGNA, UTAH, 84044  
801-250-2118

### CULINARY, SECONDARY & SEWER PLACEMENT DETAIL

DEPARTMENT	
<b>ENGINEERING</b>	
STANDARD DETAIL	REVISION
<b>1A</b>	<b>JULY 2020</b>



## CUL-DE-SAC DETAIL



SECTION A-A

**NOTE:**  
SLOPE CONCRETE TO DRAIN AWAY FROM METER BOX LID, FIRE HYDRANT OR VALVE



8885 WEST 3500 SOUTH  
MAGNA, UTAH, 84044  
801-250-2118

CULINARY, SECONDARY &  
SEWER PLACEMENT DETAIL

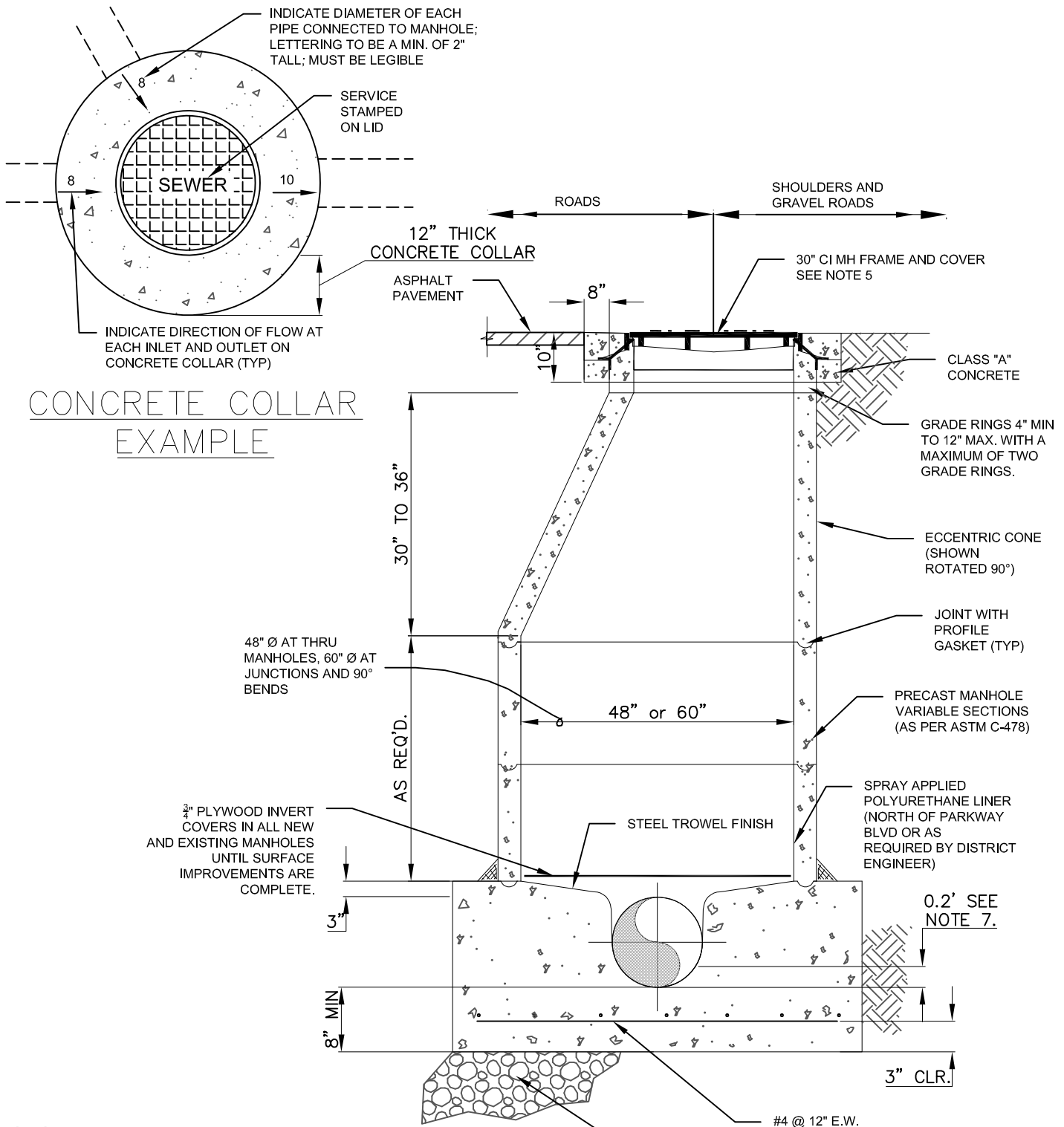
DEPARTMENT

ENGINEERING

STANDARD DETAIL  
1B

REVISION

JULY 2020



CONCRETE COLLAR  
EXAMPLE

NOTES:

1. LOCATE MANHOLE COVER ON DOWNSTREAM SIDE OF MANHOLE
2. SET MANHOLE FRAME IN GROUT
3. ALL JOINTS TO BE WATER TIGHT. EXTRA GROUTING & SEALING MAY BE REQUIRED BELOW WATER TABLE.
4. MANHOLE BASE AND 1ST SECTION OF MANHOLE TO BE FABRICATED AS AN INTEGRAL UNIT.
5. RING & COVER TO EXTEND 12" ABOVE FINISH GRADE FOR NONTRAVELED AREA. MATCH FINISHED ROADWAY GRADE IN TRAVELED AREAS.
6. FLEXIBLE PIPE JOINTS AT ALL CONNECTIONS TO BE T-LOCK OR RUBBER BOOT.
7. NEW SEWER MAINS OR LATERALS ENTERING A MANHOLE SHALL BE A MINIMUM OF 0.2' ABOVE THE FLOWLINE OF THE EXISTING PIPE AT THE POINT OF CONNECTION FOR LOW FLOW COLLECTION MAINS. FOR HIGH FLOW TRANSMISSION MAINS, THE ELEVATION SHALL MATCH THE HYDRAULIC GRADE LINES DETERMINED BY AN ENGINEER.

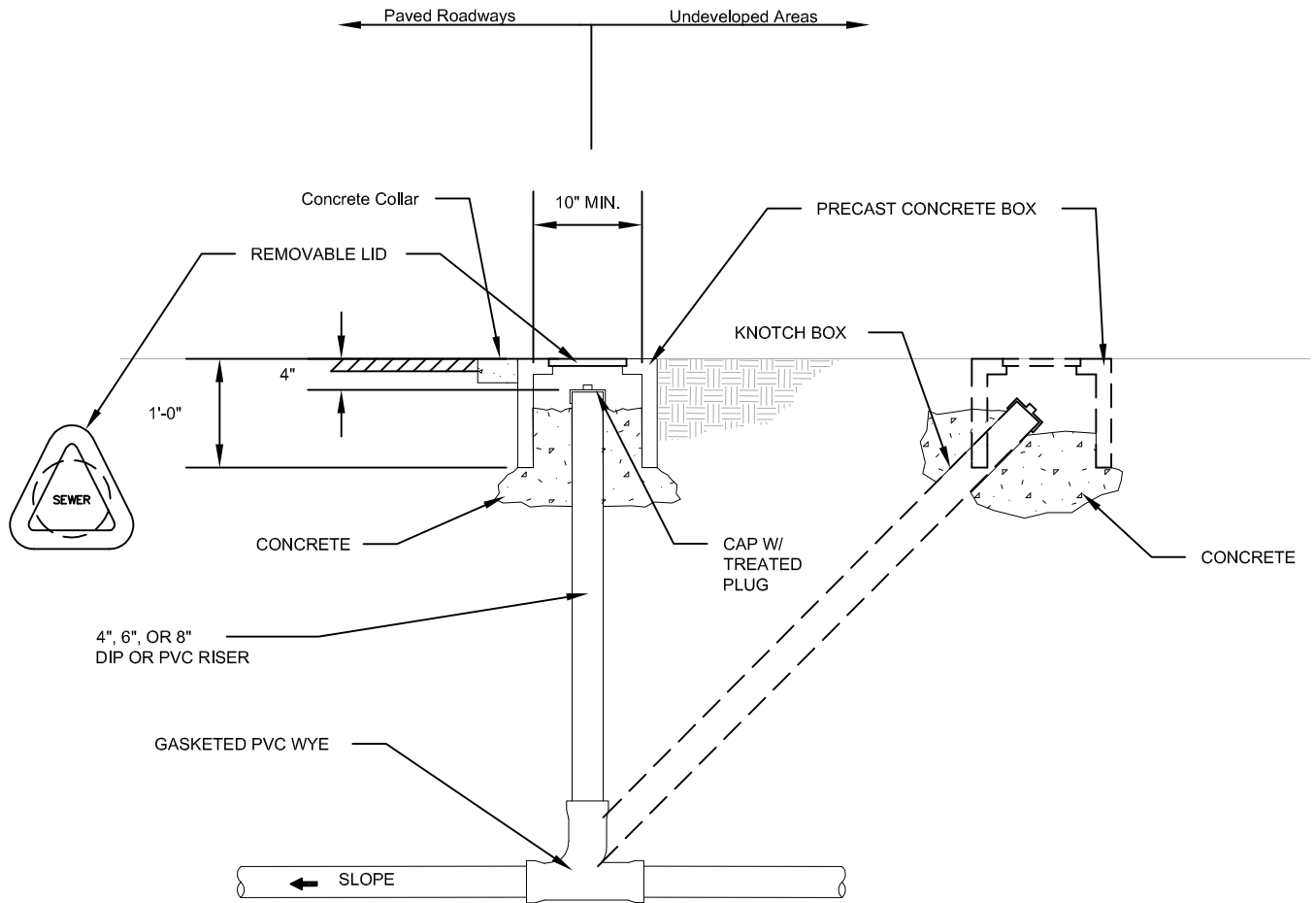
PRECAST MANHOLE DETAIL  
N.T.S.



8885 WEST 3500 SOUTH  
MAGNA, UTAH, 84044  
801-250-2118

STANDARD MANHOLE  
DETAIL

DEPARTMENT	
<b>ENGINEERING</b>	
STANDARD DETAIL	REVISION
<b>2</b>	<b>JULY 2020</b>



A SEWER CLEANOUT  
 - N.T.S.



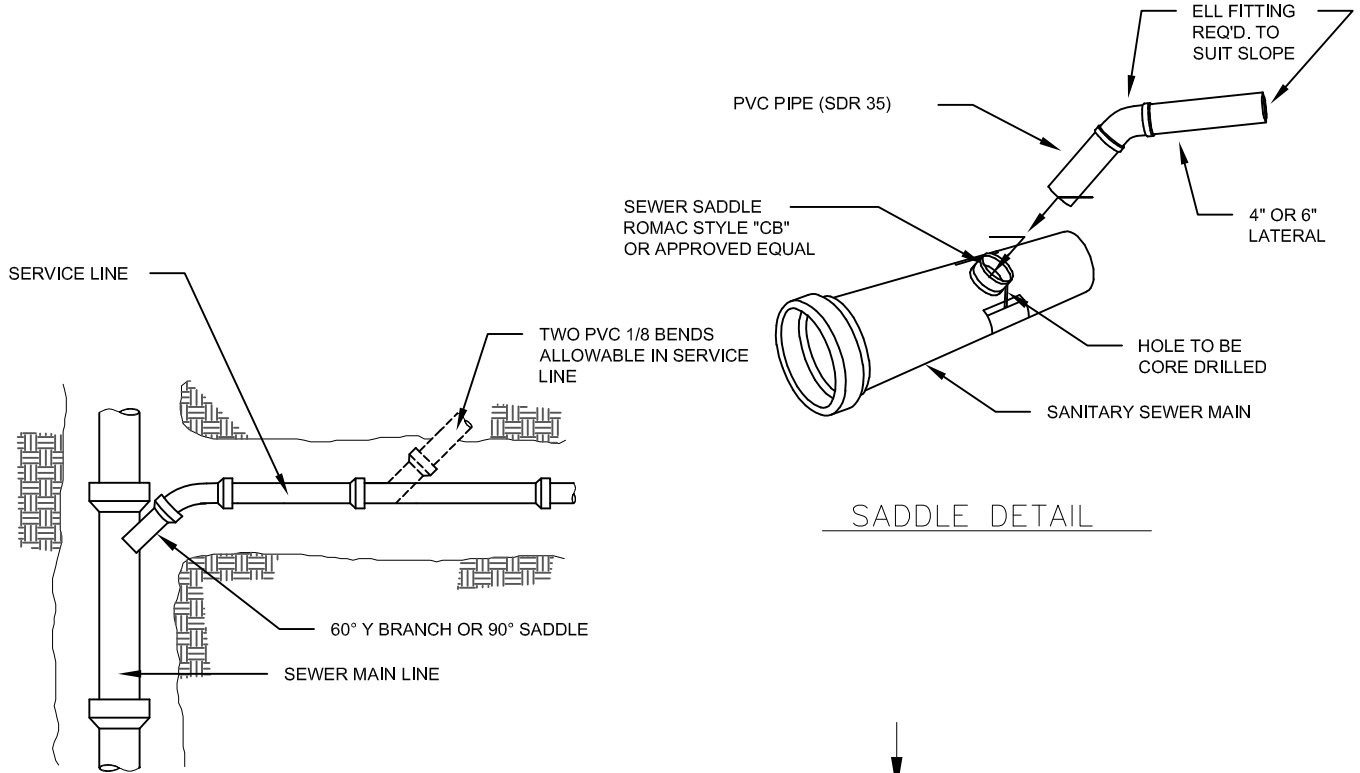
8885 WEST 3500 SOUTH  
 MAGNA, UTAH, 84044  
 801-250-2118

SEWER CLEANOUT

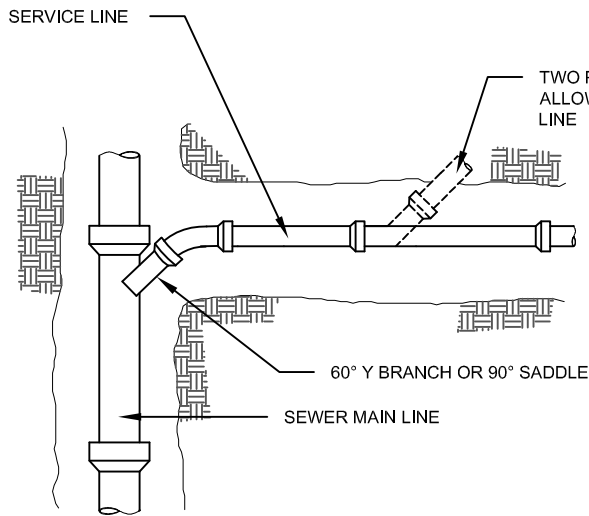
DEPARTMENT	
ENGINEERING	
STANDARD DETAIL	REVISION
3	JULY 2020

**NOTES:**

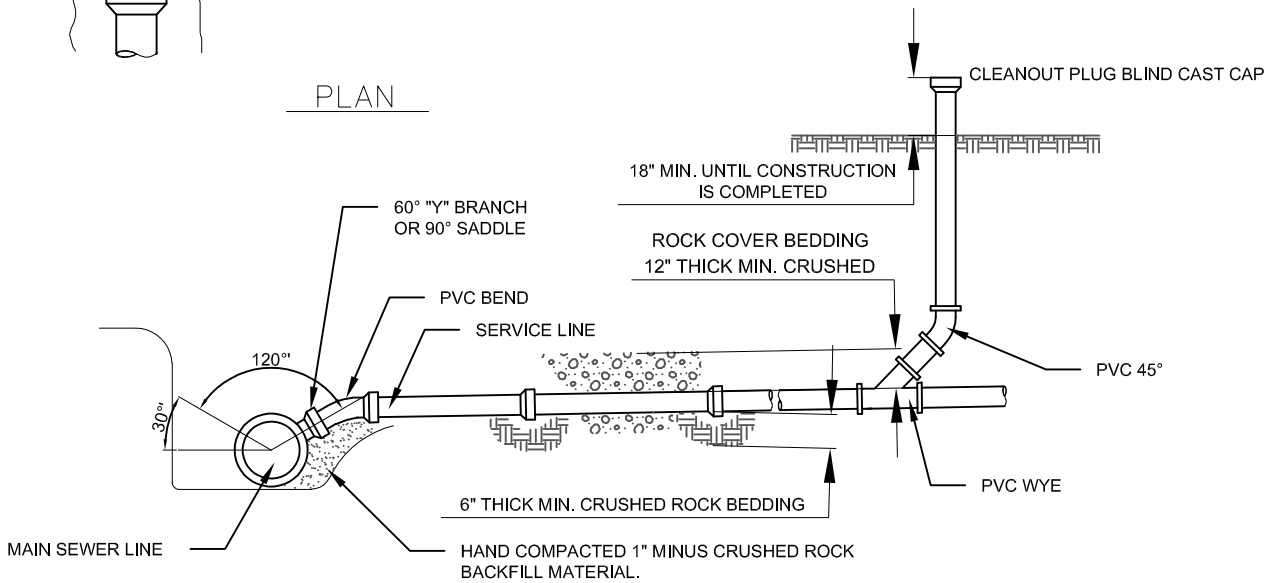
1. CLEANOUTS WILL BE REQUIRED WHERE SERVICE LATERALS EXCEED 50' FROM BUILDING TO PROPERTY LINE AND WHERE DEEMED NECESSARY BY THE INSPECTOR.
2. CONNECTIONS TO EXISTING MAINS SHALL BE SEWER SADDLE TYPE MACHINE CORE DRILLED AND GASKETED.
3. PREFERRED ARRANGEMENT: CENTERLINE OF WYE BRANCH TO BE PLACED IN UPPER THIRD OF MAIN.
4. CONCRETE THRUST BLOCKING ON ALL BENDS REQUIRED.



SADDLE DETAIL



PLAN



MIN. SLOPE -- 1/8" PER FOOT FOR 6" PIPE (1%)

-- 1/4" PER FOOT FOR 4" PIPE (2%)

ELEVATION



8885 WEST 3500 SOUTH  
MAGNA, UTAH, 84044  
801-250-2118

**SEWER SERVICE LATERAL**

DEPARTMENT

**ENGINEERING**

STANDARD DETAIL

**4**

REVISION

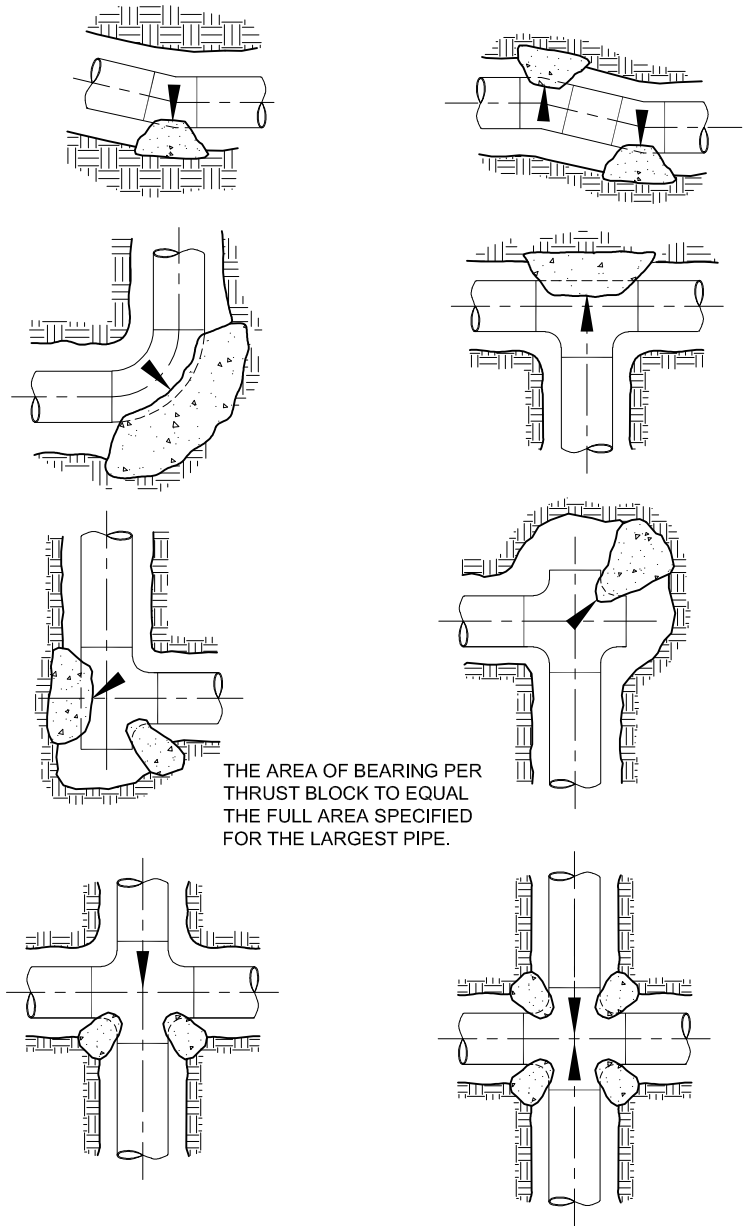
**JULY 2020**

**NOTES:**

1. ALL WORK MUST BE INSPECTED BY MAGNA WATER DISTRICT PRIOR TO BACKFILL.
2. THRUST BLOCKS MUST BE POURED AGAINST UNDISTURBED SOIL.
3. ALL PIPE JOINTS MUST BE LEFT ACCESSIBLE.
4. CONCRETE MUST BE ALLOWED TO CURE FOR 5 DAYS PRIOR TO PRESSURIZING WATER LINES.
5. CONCRETE MUST HAVE A MINIMUM OF 3000 P.S.I. COMPRESSIVE STRENGTH IN 28 DAYS.
6. THRUST BLOCKS MUST BE POURED AS CLOSE AS POSSIBLE TO THE CONFIGURATION SHOWN.
7. BEARING AREAS FOR HORIZONTAL BEND THRUST BLOCKS ARE BASED ON TEST PRESSURE OF 200 PSIG AND AN ALLOWABLE SOIL BEARING STRESS OF 2000 LBS./SQ. FT. TO COMPUTE BEARING AREAS FOR DIFFERENT TEST PRESSURES AND SOIL BEARING STRESS. USE THE FOLLOWING EQUATION: BEARING AREA = (TEST PRESS./200) X (2000/SOIL BEARING STRESS) X (TABLE VALUE).
8. BEARING AREAS, VOLUMES, AND SPECIAL BLOCKING DETAILS SHOWN ON PLANS TAKE PRECEDENCE OVER THIS STANDARD.
9. BEARING AREAS FOR PIPE SIZES NOT SHOWN REQUIRE A SPECIAL DESIGN.

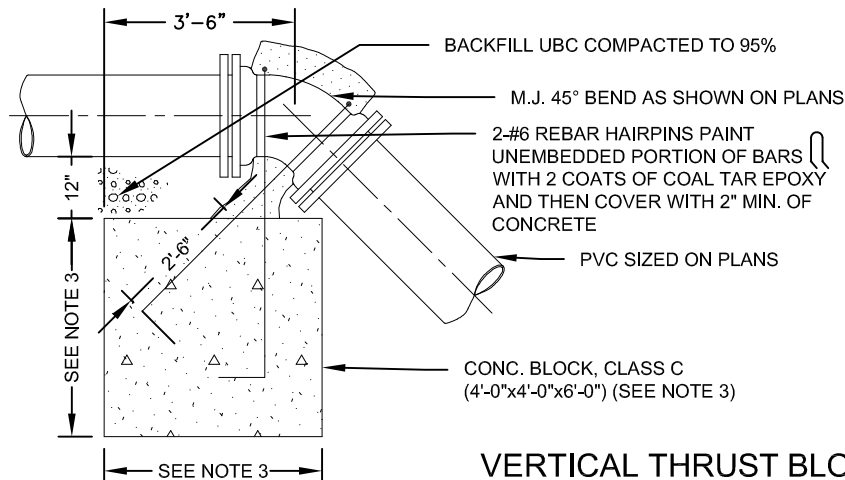
THE AREA OF BEARING PER THRUST BLOCK TO EQUAL 1/2 THE AREA SPECIFIED FOR THE LARGEST PIPE.

MINIMUM BEARING AREA IN SQ. FT.					
PIPE SIZE	TEES, VAL, DEAD ENDS	90° BEND	45° BEND	22.5° BEND	11.25° BEND
4"	2	2	2	2	2
6"	3	4	3	2	2
8"	5	8	4	2	2
10"	8	12	6	4	3
12"	12	16	9	5	3
14"	19	26	14	7	4
16"	21	29	16	8	4



THE AREA OF BEARING PER THRUST BLOCK TO EQUAL THE FULL AREA SPECIFIED FOR THE LARGEST PIPE.

**HORIZONTAL THRUST BLOCKING**



**VERTICAL THRUST BLOCKING**

**NOTES:**

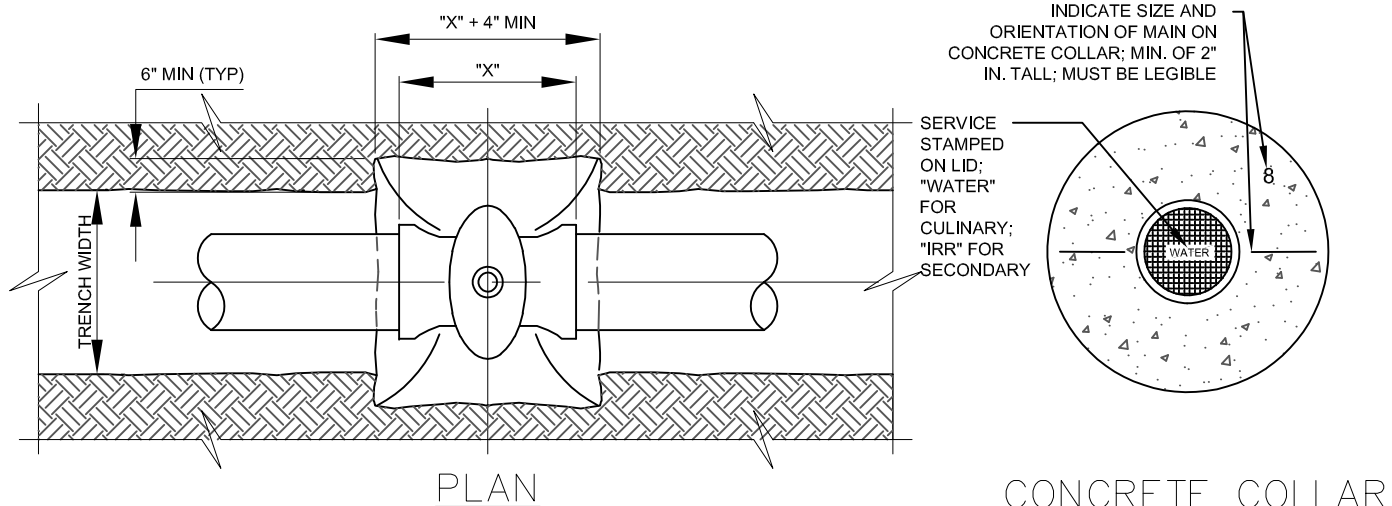
1. CONTRACTOR TO USE MECHANICAL THRUST RESTRAINT ON ALL VERTICAL BEND FITTINGS IN ADDITION TO THE AMOUNT OF CONCRETE SHOWN ABOVE.
2. CONTRACTOR SHALL USE THRUST RESTRAINT ON TWO HORIZONTAL JOINTS PRIOR TO AND TWO JOINTS FOLLOWING THE VERTICAL BEND.
3. DIMENSIONS OF CONCRETE BLOCK AS REQUIRED TO OBTAIN MINIMUM VOLUME OF 2 CUBIC YARDS



8885 WEST 3500 SOUTH  
MAGNA, UTAH, 84044  
801-250-2118

**WATERLINE THRUST BLOCKING**

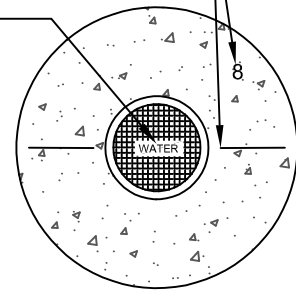
DEPARTMENT	
<b>ENGINEERING</b>	
STANDARD DETAIL	REVISION
<b>5</b>	<b>JULY 2020</b>



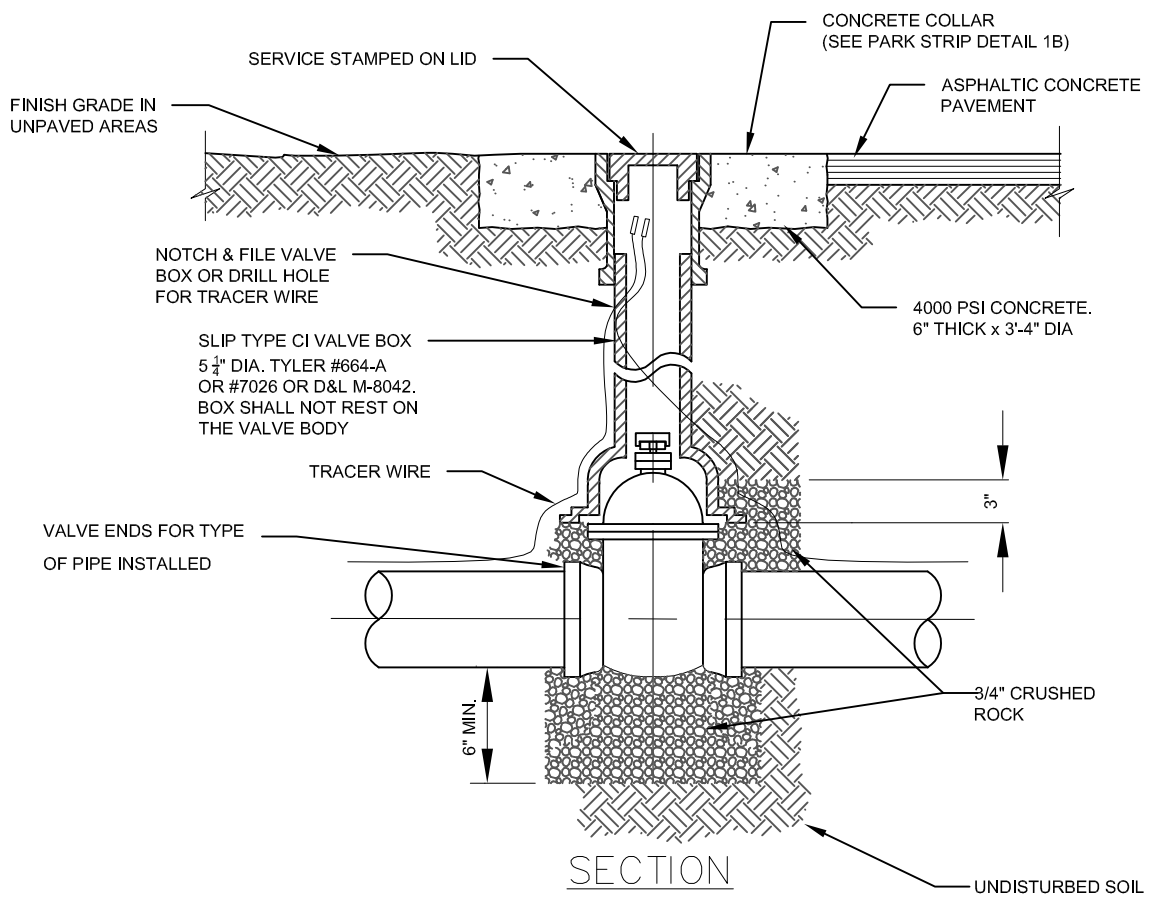
PLAN

INDICATE SIZE AND ORIENTATION OF MAIN ON CONCRETE COLLAR; MIN. OF 2" IN. TALL; MUST BE LEGIBLE

SERVICE STAMPED ON LID; "WATER" FOR CULINARY; "IRR" FOR SECONDARY



CONCRETE COLLAR EXAMPLE



SECTION

- NOTES:**
1. ALL BURIED VALVES SHALL BE PROVIDED W/ 2" SQ. AWWA NUT. NUT IS TO INDICATE DIRECTION OF ROTATION TO OPEN VALVE.
  2. COAT BURIED PIPE & VALVE BOX PER SPECIFICATIONS.
  3. CLEAN VALVE BOX OF ALL DEBRIS AND SOIL.



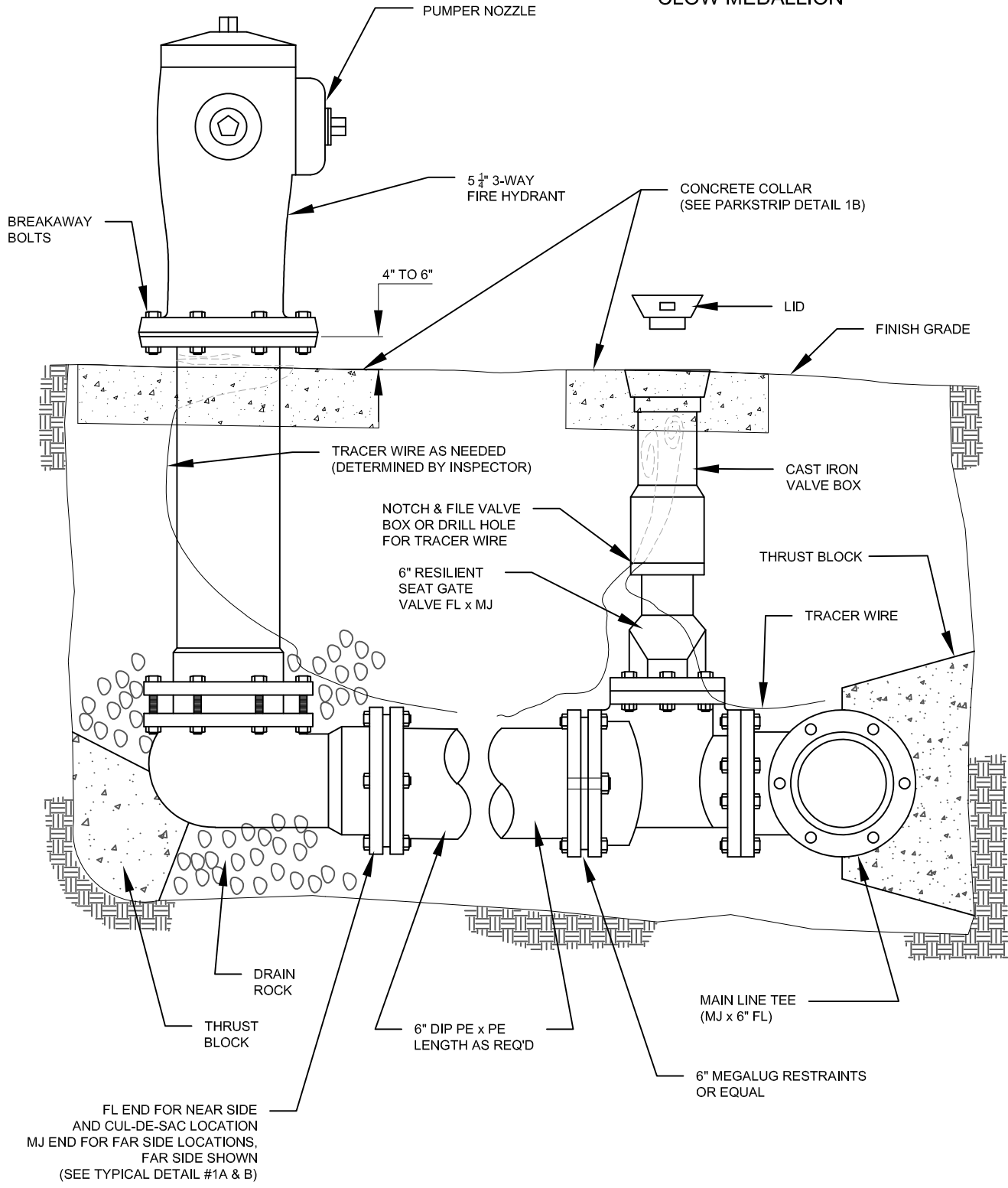
8885 WEST 3500 SOUTH  
MAGNA, UTAH, 84044  
801-250-2118

GATE VALVE

DEPARTMENT	
ENGINEERING	
STANDARD DETAIL	REVISION
6	JULY 2020



**APPROVED MANUFACTURERS:  
MUELLER SUPER CENTURION,  
CLOW MEDALLION**



**NOTE: HYDRANT & FITTINGS  
TO BE POLY WRAPPED.**



8885 WEST 3500 SOUTH  
MAGNA, UTAH, 84044  
801-250-2118

**FIRE HYDRANT DETAIL**

DEPARTMENT	
<b>ENGINEERING</b>	
STANDARD DETAIL	REVISION
<b>7</b>	<b>JULY 2020</b>

**RELOCATED METERS**

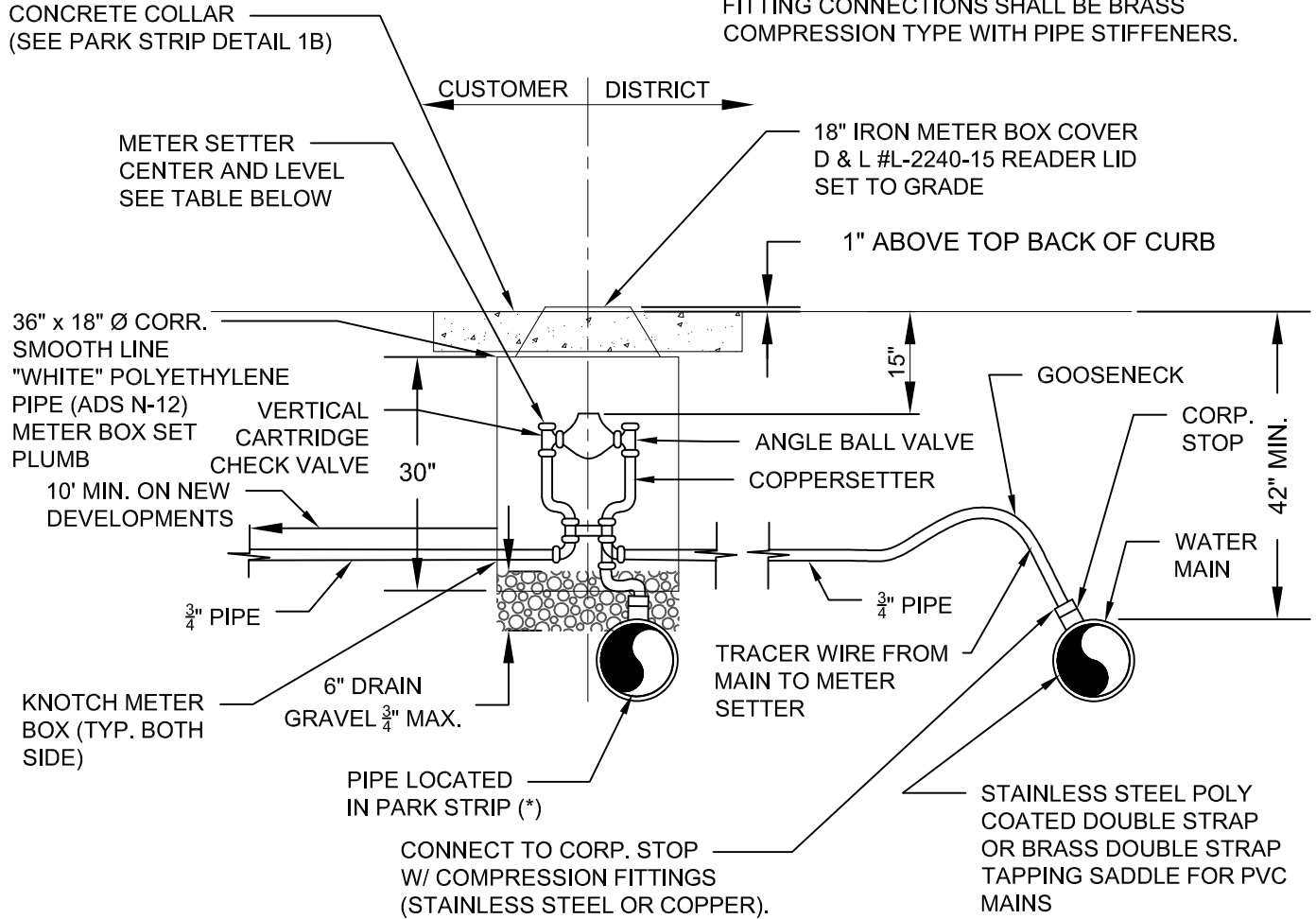
EXIST. LID, BOX, METER, AND SETTER TO BE RELOCATED TO LOCATIONS SHOWN ON PLANS. CONNECTION TO THE SUPPLY MAIN, CORP. STOP, AND SERVICE PIPING FROM THE MAIN TO THE METER, AND FROM THE METER TO THE OWNER'S PIPING TO BE PROVIDED BY THE CONTRACTOR MAKING SERVICE COMPLETE AND OPERATIONAL. AT THE OPTION OF THE DISTRICT NEW COMPONENTS OF THE LID, BOX, METER, OR SETTER MAY BE PROVIDED, IN WHICH THE NEW COMPONENTS SHALL BE USED AS PART OF THE RELOCATION CONNECTION.

**NEW METERS**

NEW METERS SHALL BE INSTALLED AT THE LOCATIONS SHOWN ON THE PLANS. THE LID, BOX, AND SETTER WILL BE PROVIDED BY THE CONTRACTOR. THE METER WILL BE PROVIDED BY THE DISTRICT. CONNECTION TO THE SUPPLY MAIN, CORP. STOP, AND SERVICE AND FROM THE METER TO 10'-0" ON TO THE OWNER'S PROPERTY SHALL BE PROVIDED BY THE CONTRACTOR

**GENERAL NOTE**

ALL SERVICE LINES 1" OR LESS SHALL USE SMOOTH WALL HDPE BLUE PIPE SDR 9 PE 3408. FITTING CONNECTIONS SHALL BE BRASS COMPRESSION TYPE WITH PIPE STIFFENERS.



WATER METER SETTER		
METER SIZE	RISER HEIGHT	MUELLER MODEL #
5/8" x 3/4"	18"	B-2470-6AN
3/4" x 3/4"	18"	B-2470-6AN



8885 WEST 3500 SOUTH  
MAGNA, UTAH, 84044  
801-250-2118

**3/4" WATER METER SERVICE WITH SETTER**

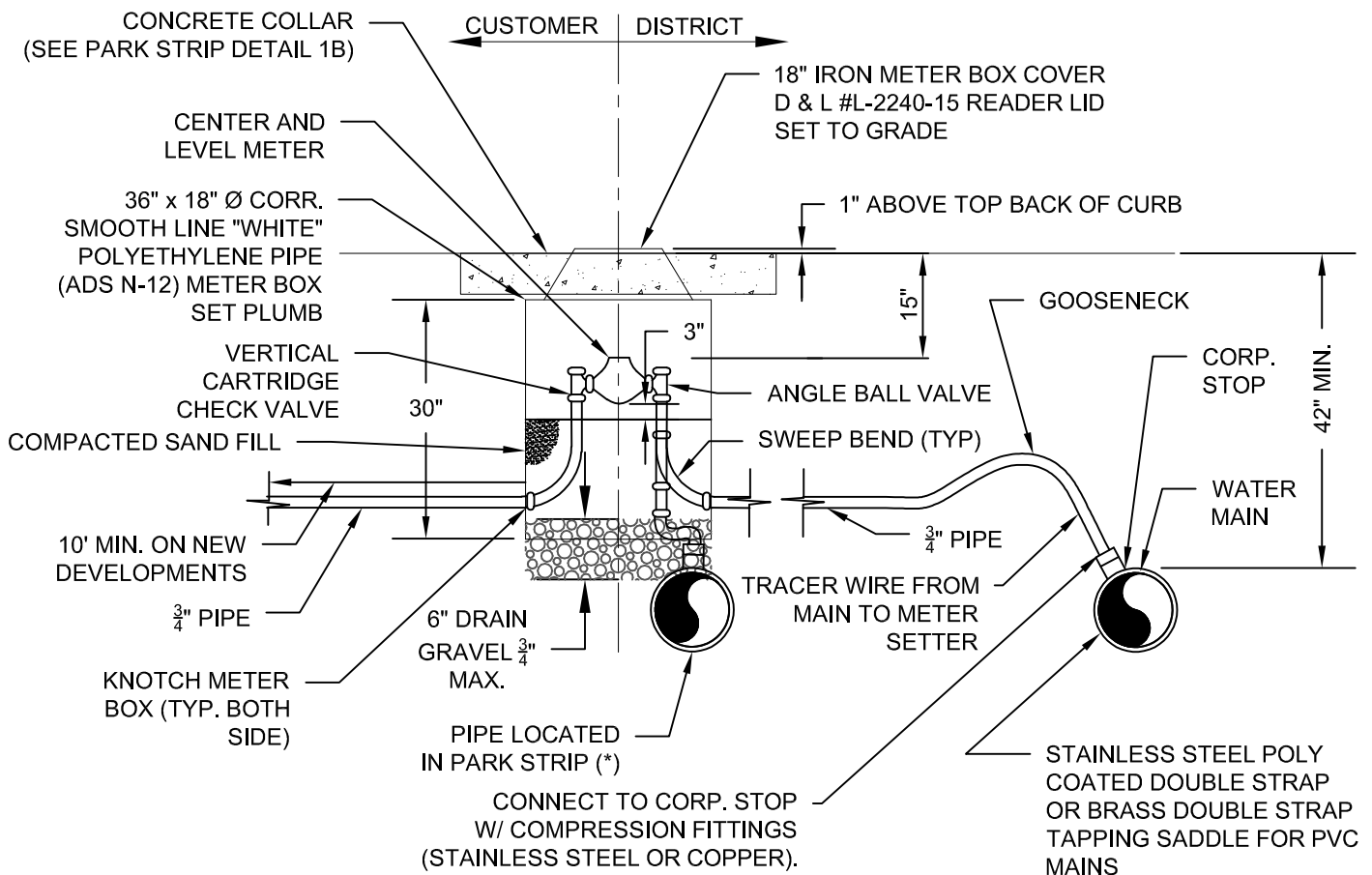
DEPARTMENT	
<b>ENGINEERING</b>	
STANDARD DETAIL	REVISION
<b>8</b>	<b>JULY 2020</b>

RELOCATED METERS EXIST. LID, BOX, METER AND SETTER TO BE RELOCATED TO LOCATIONS SHOWN ON PLANS. CONNECTION TO THE SUPPLY MAIN, CORP. STOP, AND SERVICE PIPING FROM THE MAIN TO THE METER, AND FROM THE METER TO THE OWNERS PIPING TO BE PROVIDED BY THE CONTRACTOR MAKING SERVICE COMPLETE AND OPERATIONAL. AT THE OPTION OF THE DISTRICT NEW COMPONENTS OF THE LID, BOX, METER OR SETTER MAY BE PROVIDED, IN WHICH THE NEW COMPONENTS SHALL BE USED AS PART OF THE RELOCATION CONNECTION.

NEW METERS NEW METERS SHALL BE INSTALLED AT THE LOCATIONS SHOWN ON THE PLANS. THE LID, BOX, AND THE METER WILL BE PROVIDED BY THE DISTRICT. SETTER WILL BE PROVIDED BY THE CONTRACTOR. CONNECTION TO THE SUPPLY MAIN, CORP. STOP, AND SERVICE PIPING FROM THE MAIN TO THE METER AND FROM THE METER TO 10'-0" ONTO THE OWNERS PROPERTY SHALL BE PROVIDED BY THE CONTRACTOR.

GENERAL NOTE

1. ALL SERVICE LINES 1" OR LESS SHALL USE SMOOTH WALL HDPE PIPE SDR 9 PE 3408. FITTING CONNECT SHALL BE BRASS COMPRESSION TYPE WITH PIPE STIFFENERS.
2. DETAIL 8A IS AN ALTERNATIVE TO DETAIL 8 AND MAY ONLY BE USED IF GIVEN APPROVAL BY THE DISTRICT ENGINEER.



8885 WEST 3500 SOUTH  
MAGNA, UTAH, 84044  
801-250-2118

**3/4" WATER METER SERVICE  
WITHOUT SETTER**

DEPARTMENT

**ENGINEERING**

STANDARD DETAIL

**8A**

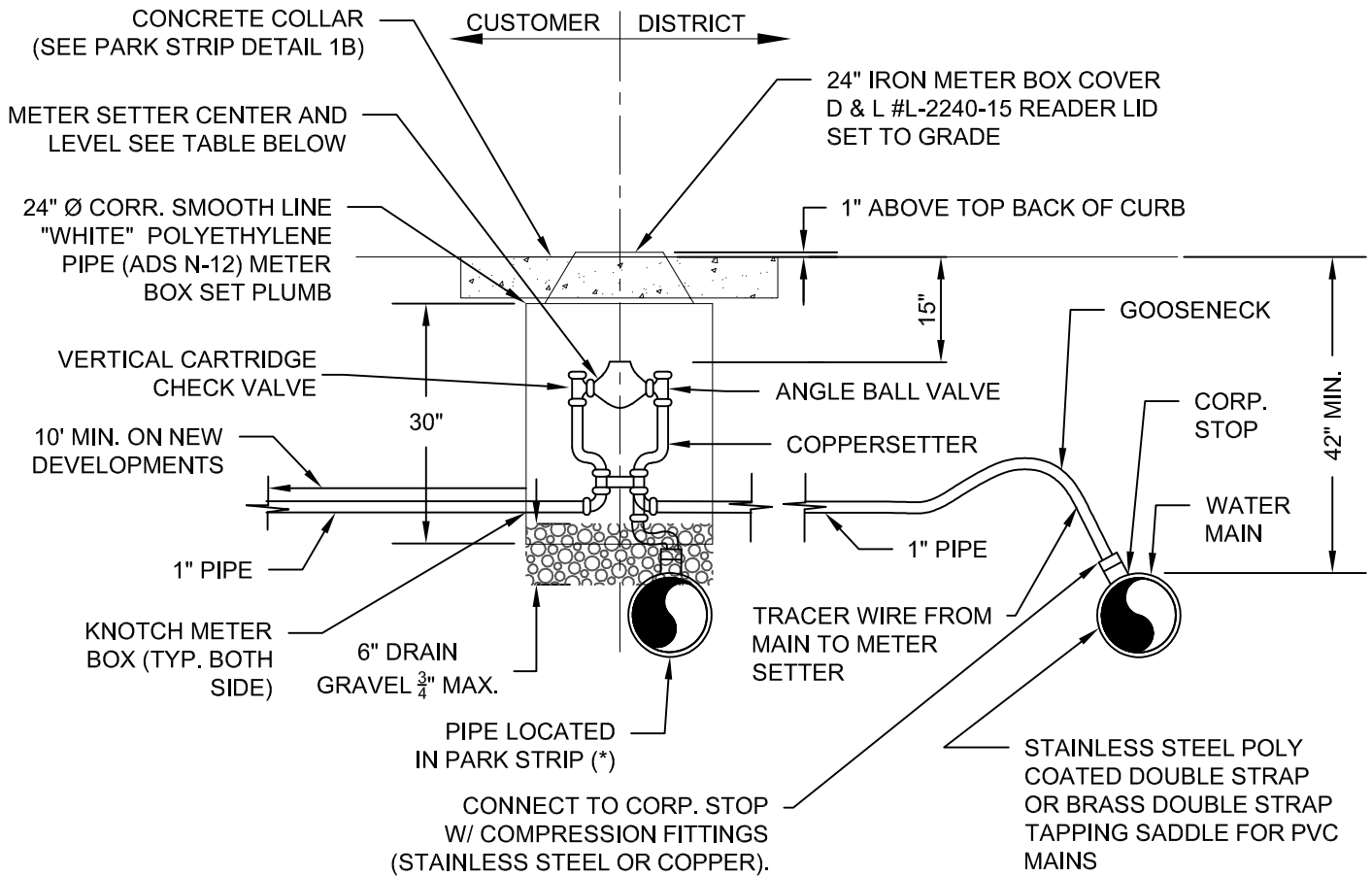
REVISION

**JULY 2020**

**RELOCATED METERS:**  
 EXIST. LID, BOX, METER AND SETTER TO BE RELOCATED TO LOCATIONS SHOWN ON PLANS. CONNECTION TO THE SUPPLY MAIN, CORP. STOP, AND SERVICE PIPING FROM THE MAIN TO THE METER, AND FROM THE METER TO THE OWNERS PIPING TO BE PROVIDED BY THE CONTRACTOR MAKING SERVICE COMPLETE AND OPERATIONAL. AT THE OPTION OF THE DISTRICT NEW COMPONENTS OF THE LID, BOX, METER OR SETTER MAY BE PROVIDED, IN WHICH THE NEW COMPONENTS SHALL BE USED AS PART OF THE RELOCATION CONNECTION.

**NEW METERS:**  
 NEW METERS SHALL BE INSTALLED AT THE LOCATIONS SHOWN ON THE PLANS. THE LID, BOX, AND SETTER WILL BE PROVIDED BY THE CONTRACTOR. THE METER WILL BE PROVIDED BY THE DISTRICT. CONNECTION TO THE SUPPLY MAIN, CORP. STOP, AND SERVICE PIPING FROM THE MAIN TO THE METER AND FROM THE METER TO 10'-0" ONTO THE OWNERS PROPERTY SHALL BE PROVIDED BY THE CONTRACTOR.

**GENERAL NOTE:**  
 ALL SERVICE LINES 1" OR LESS SHALL USE SMOOTH WALL HDPE PIPE SDR 9 PE 3408. FITTING CONNECT SHALL BE BRASS COMPRESSION TYPE WITH PIPE STIFFENERS.



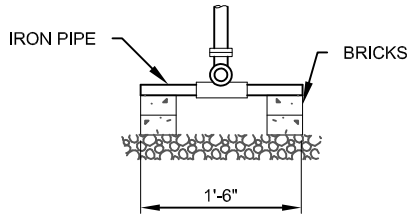
WATER METER SETTER		
METER SIZE	RISER HEIGHT	MUELLER MODEL #
1" x 1"	18"	B-2470-6AN



8885 WEST 3500 SOUTH  
 MAGNA, UTAH 84044  
 801-250-2118

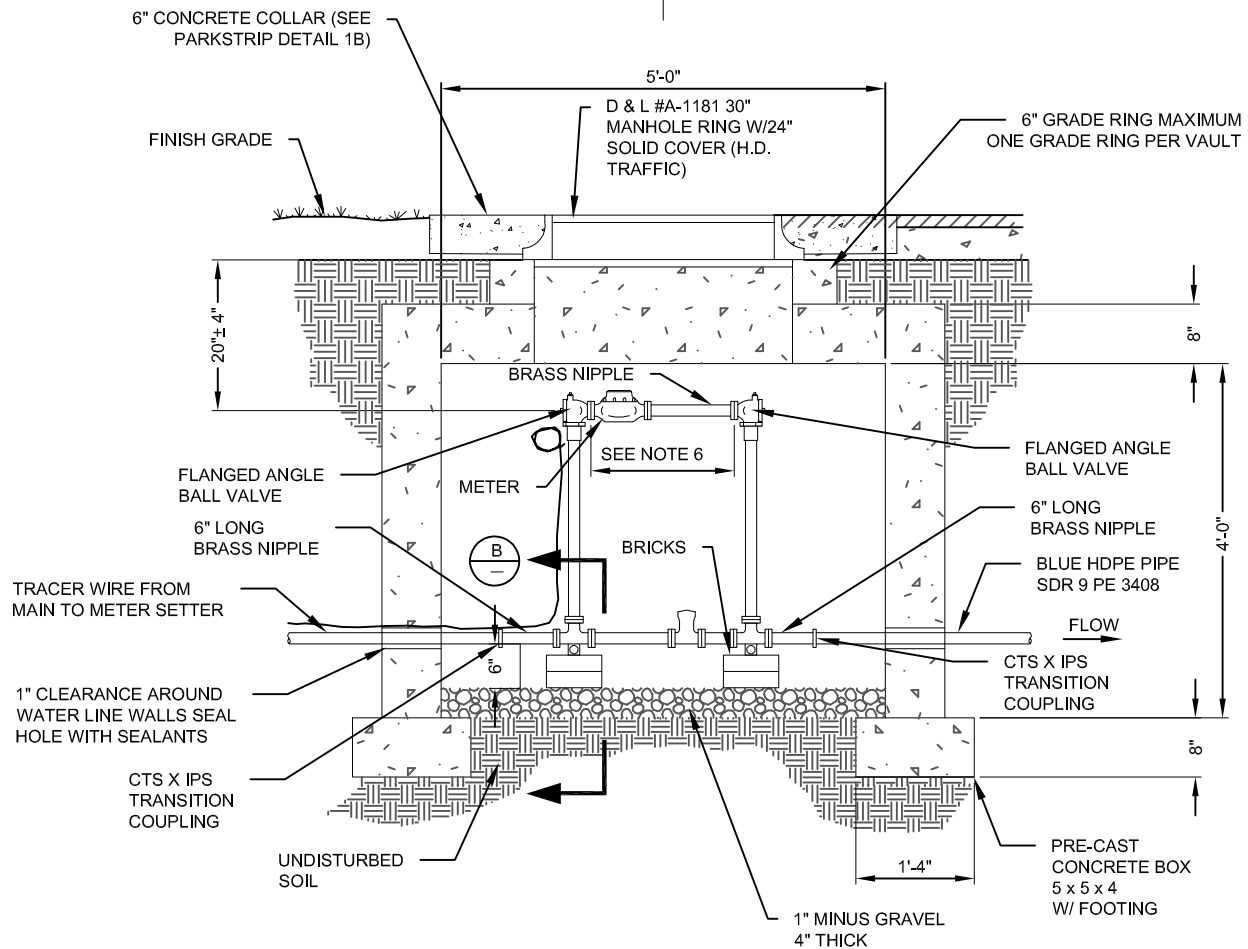
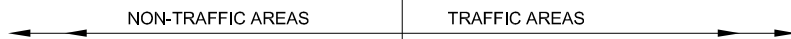
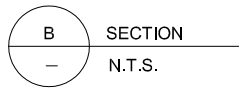
**1" WATER METER SERVICE**

DEPARTMENT	
<b>ENGINEERING</b>	
STANDARD DETAIL	REVISION
<b>9</b>	<b>JULY 2020</b>



**NOTES:**

1. ALL WORK MUST BE INSPECTED BY MAGNA WATER DISTRICT PRIOR TO BACKFILL.
2. CENTER MANHOLE OVER THE METER.
3. BYPASS VALVE TO BE LEFT IN THE OFF POSITION & SEALED BY MAGNA WATER DISTRICT.
4. METER SUPPLIED BY MAGNA WATER DISTRICT.
5. METER LAYING LENGTH DETERMINED BY MAGNA WATER DISTRICT.
6. 1 1/2" DISK METER = 13 1/4"  
 1 1/2" TURBINE METER = 13 1/4"  
 2" DISK METER = 17 1/4"  
 2" TURBINE METER = 17 1/4"



WATER METER SETTER		
METER SIZE	FORD MODEL #	MUELLER MODEL #
1 1/2"	VBB76-24B-11-66x13.25	B-2423
2"	VBB77-24B-11-77x17.25	B-2423



8885 WEST 3500 SOUTH  
 MAGNA, UTAH 84044  
 801-250-2118

**1 1/2" & 2" METER VAULT**

DEPARTMENT

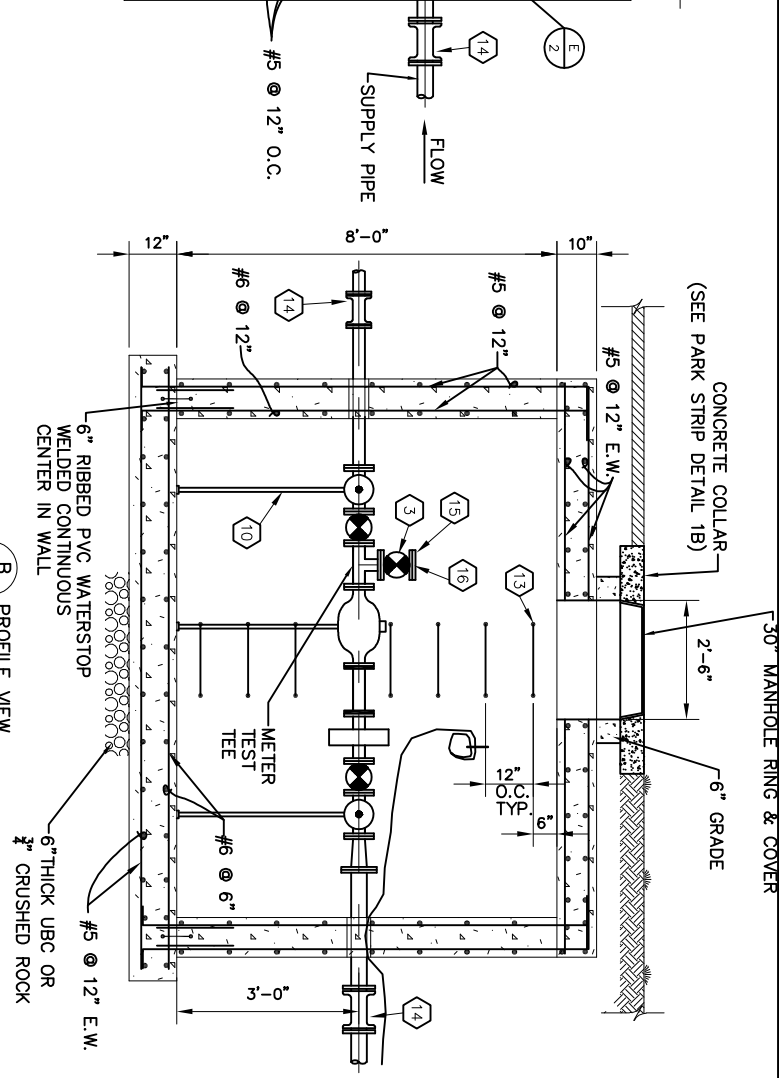
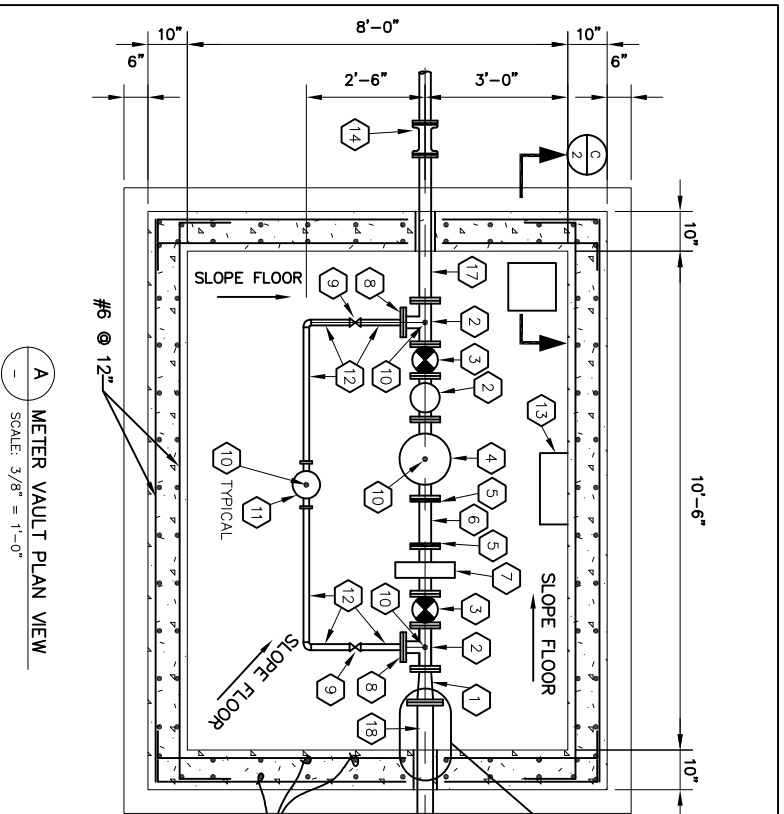
**ENGINEERING**

STANDARD DETAIL

**10**

REVISION

**JULY 2020**



**A** METER VAULT PLAN VIEW  
SCALE: 3/8" = 1'-0"

**B** PROFILE VIEW  
SCALE: 3/8" = 1'-0"

MARK	QUANTITY	DESCRIPTION
1	1	4" x 3" FL REDUCER
2	3	3" FL TEE
3	3	3" FL BALL VALVE
4	1	METER BY MAGNA WATER DISTRICT
5	2	3" VICTAULIC FLANGE ADAPTOR
6	1	3" x 1'-0" LONG GROOVED END DI PIPE (CLASS 55 MIN.)
7	1	3" FL PLATE STRAINER BY MAGNA WATER DISTRICT
8	2	3" FL x 1 1/2" THREADED
9	2	1 1/2" THREADED BALL VALVE

MARK	QUANTITY	DESCRIPTION
10	4	PIPE SUPPORT
11	1	1 1/2" FL BYPASS METER BY MAGNA WATER DISTRICT
12	-	1 1/2" COPPER PIPE
13	-	POLYPROPYLENE MANHOLE STEPS
14	2	MJ SOLID SLEEVES W/ MEGA LUG RESTRAINTS
15	1	3" FL x 3" THREADED
16	1	3" FL x PE DI PIPE
17	1	3" THREADED BRASS PLUG
18	1	4" FL x PE DI PIPE

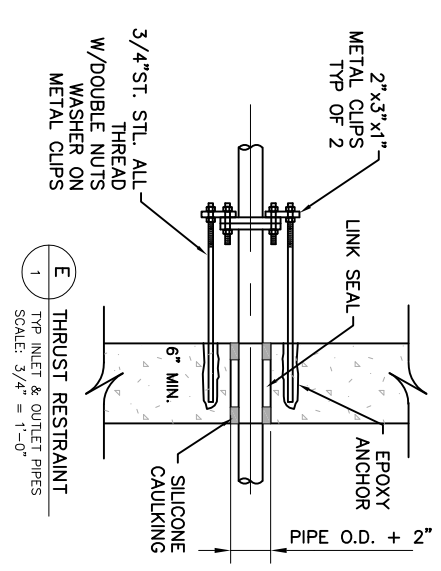
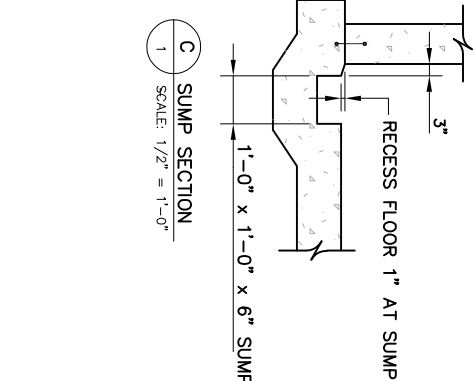
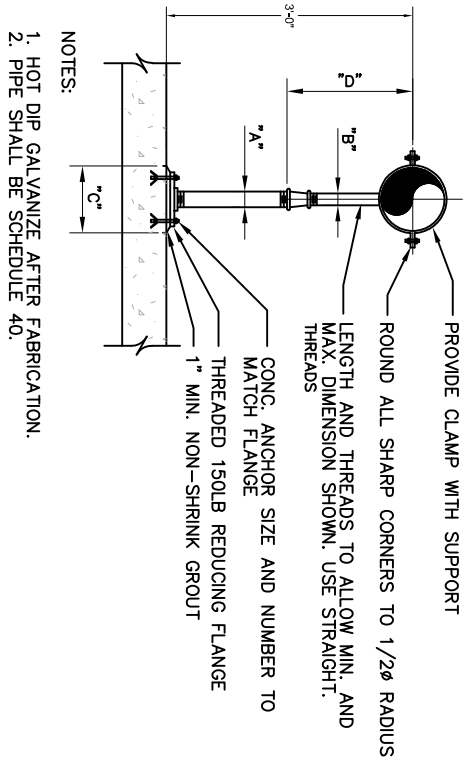
**NOTE:**  
 CAST-IN-PLACE BOX SHOWN. PRECAST BOX ALTERNATE SUBJECT TO FOLLOWING:  
 1. H-20 LOADING  
 2. SUBMERGENCE DEPTH OF 8 FEET.  
 3. NO HORIZONTAL JOINTS THROUGH THE PIPE OPENINGS.  
 4. WATER STOP @ WALL/FLOOR JOINT.

8885 WEST 3500 SOUTH  
 MAGNA, UTAH, 84044  
 801-250-2118

**3-INCH WATER METER VAULT**

DEPARTMENT  
**ENGINEERING**  
 STANDARD DETAIL  
 REVISION  
**JULY 2020**  
 DRAWING NO.  
**1 OF 2**





F ADJUSTABLE PIPE SUPPORT  
1 N.T.S.

C SUMP SECTION  
SCALE: 1/2" = 1'-0"

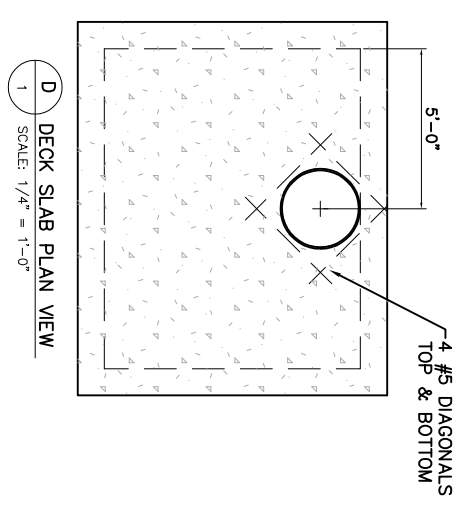
E THRUST RESTRAINT  
1 TYP INLET & OUTLET PIPES  
SCALE: 3/4" = 1'-0"

NOTES:  
1. HOT DIP GALVANIZE AFTER FABRICATION.  
2. PIPE SHALL BE SCHEDULE 40.

ADJUSTABLE PIPE SADDLE SUPPORT SCHEDULE DIMENSIONS IN INCHES

PIPE SIZE	A	B	C	D	
				MINIMUM	MAXIMUM
*2 1/2	2 1/2	1 1/2	9	8	13
3	2 1/2	1 1/2	9	8 1/2	13 1/2
3 1/2	2 1/2	1 1/2	9	8 1/2	13 1/2
4	3	2 1/2	9	9 1/2	14
6	3	2 1/2	9	10 1/2	15 1/2
8	3	2 1/2	9	11 1/2	16 1/2
10	3	2 1/2	9	13 1/2	18 1/2
12	3	2 1/2	9	15	19 1/2

\* USE 2 1/2" SUPPORTS FOR PIPE LESS THAN 2 1/2" Ø

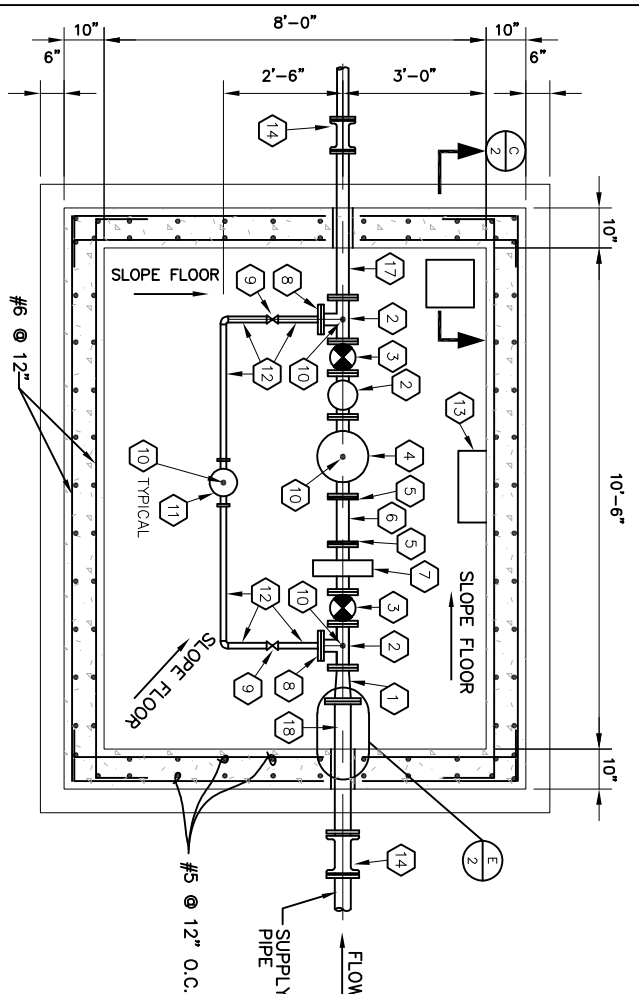


D DECK SLAB PLAN VIEW  
1 SCALE: 1/4" = 1'-0"

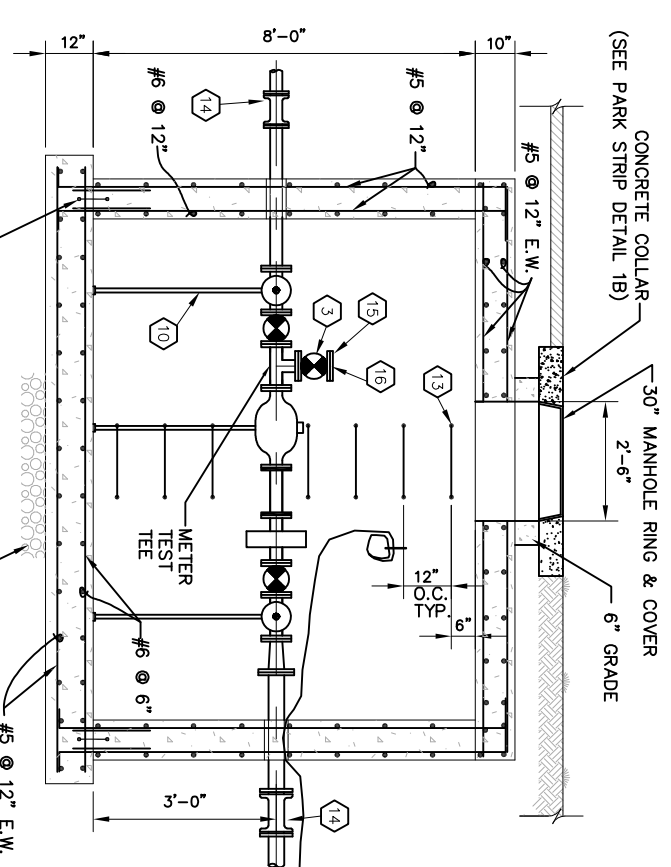
8885 WEST 3500 SOUTH  
MAGNA, UTAH, 84044  
801-250-2118

3-INCH WATER  
METER VAULT

ENGINEERING  
DEPARTMENT  
STANDARD DETAIL  
11  
REVISION  
JULY 2020  
DRAWING NO.  
2 OF 2



**A** METER VAULT PLAN VIEW  
SCALE: 3/8" = 1'-0"



**B** PROFILE VIEW  
SCALE: 3/8" = 1'-0"

MARK	QUANTITY	DESCRIPTION
1	1	FL REDUCER IF REQ'D.
2	3	4" FL TEE
3	3	4" FL RESILIENT WEDGE GATE VALVE
4	1	METER BY MAGNA WATER DISTRICT
5	2	4" VCTAULIC FLANGE ADAPTOR
6	1	4" x 1'-0" LONG GROOVED END DI PIPE (CLASS 55 MIN.)
7	1	4" FL PLATE STRAINER BY MAGNA WATER DISTRICT
8	2	4" FL x 1 1/2" THREADED
9	2	1 1/2" THREADED BALL VALVE

MARK	QUANTITY	DESCRIPTION
10	4	PIPE SUPPORT
11	1	1 1/2" FL BYPASS METER BY MAGNA WATER DISTRICT
12	1	1 1/2" COPPER PIPE
13	-	POLYPROPYLENE MANHOLE STEPS
14	2	MJ SOLID SLEEVES W/ MEGA LUG RESTRAINTS
15	1	4" FL x 4" THREADED
16	1	4" THREADED BRASS PLUG
17	1	4" FL x PE DI PIPE
18	1	4" FL x PE DI PIPE

NOTE:  
CAST-IN-PLACE BOX SHOWN. PRECAST BOX ALTERNATE SUBJECT TO FOLLOWING:

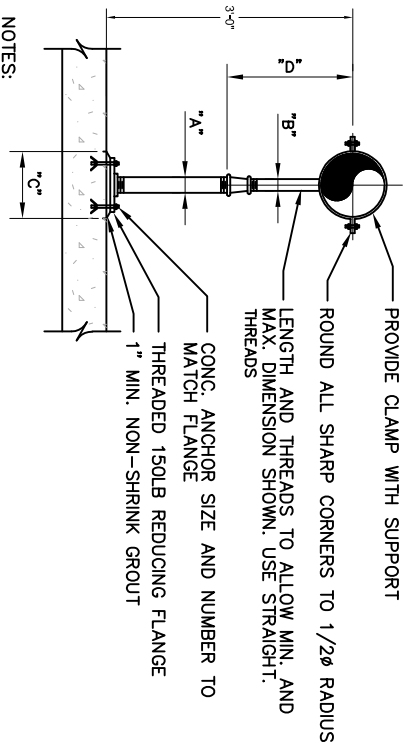
- H-20 LOADING
- SUBMERGENCE DEPTH OF 8 FEET.
- NO HORIZONTAL JOINTS. THROUGH THE PIPE OPENINGS.
- WATER STOP @ WALL/FLOOR JOINT.

**MAGNA WATER DISTRICT**  
8885 WEST 3500 SOUTH  
MAGNA, UTAH, 84044  
801-250-2118

**4-INCH WATER METER VAULT**

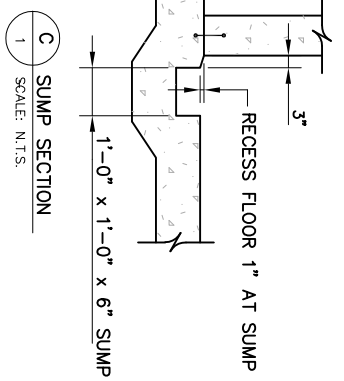
DEPARTMENT  
**ENGINEERING**  
STANDARD DETAIL  
REVISION  
**12**  
**JULY 2020**  
DRAWING NO.  
**1 OF 2**



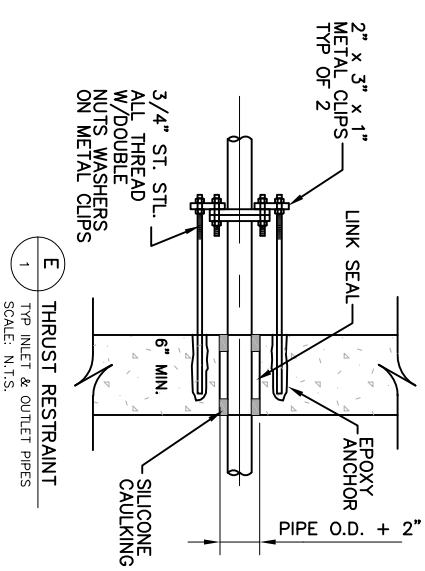


- NOTES:
- HOT DIP GALVANIZE AFTER FABRICATION.
  - PIPE SHALL BE SCHEDULE 40.

F ADJUSTABLE PIPE SUPPORT  
1 N.T.S.



C SUMP SECTION  
1 SCALE: N.T.S.

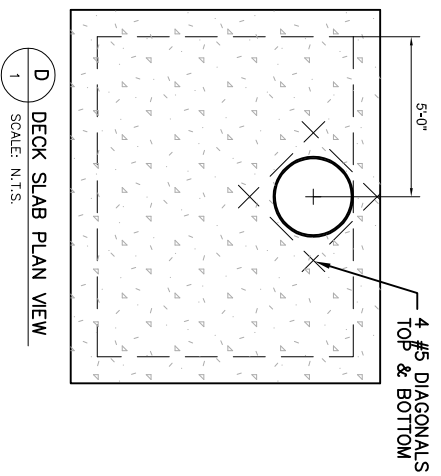


E THRUST RESTRAINT  
1 TOP INLET & OUTLET PIPES  
SCALE: N.T.S.

PIPE SIZE	A	B	C	D	
				MINIMUM	MAXIMUM
*2 1/2	2 1/2	1 1/2	9	8	13
3	2 1/2	1 1/2	9	8 1/2	13 1/2
3 1/2	2 1/2	1 1/2	9	8 1/2	13 1/2
4	3	2 1/2	9	9 1/2	14
6	3	2 1/2	9	10 1/2	15 1/2
8	3	2 1/2	9	11 1/2	16 1/2
10	3	2 1/2	9	13 1/2	18 1/2
12	3	2 1/2	9	15	19 1/2

\* USE 2 1/2" SUPPORTS FOR PIPE LESS THAN 2 1/2"φ

ADJUSTABLE PIPE SADDLE SUPPORT SCHEDULE DIMENSIONS IN INCHES

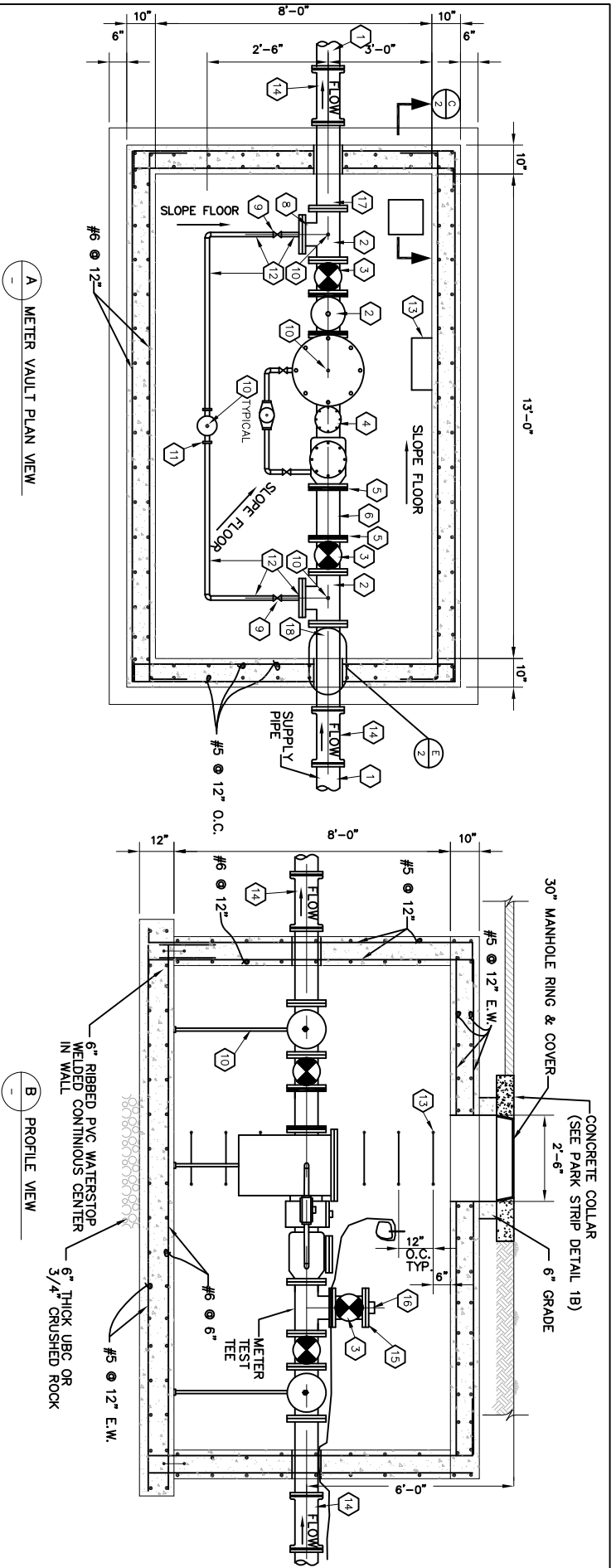


D DECK SLAB PLAN VIEW  
1 SCALE: N.T.S.

8885 WEST 3500 SOUTH  
MAGNA, UTAH, 84044  
801-250-2118

4-INCH WATER  
METER VAULT

DEPARTMENT  
**ENGINEERING**  
STANDARD DETAIL  
12  
REVISION  
JULY 2020  
DRAWING NO.  
2 OF 2



MARK	QUANTITY	DESCRIPTION
1	2	FL REDUCER IF REQ'D.
2	3	8" OR 10" FL TEE
3	3	8" OR 10" FL GATE VALVE
4	1	METER BY MAGNA WATER DISTRICT
5	2	8" OR 10" VERTICAL FLANGE ADAPTOR
6	1	8" OR 10" x 1'-0" LONG GROOVED END DI PIPE (CLASS SS MIN.)
7	1	NOT USED
8	2	8" OR 10" FL x 1 1/2" THREADED
9	2	1 1/2" THREADED BALL VALVE

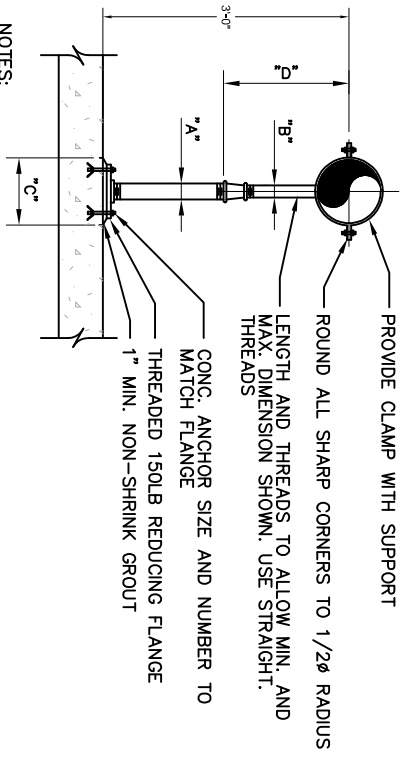
MARK	QUANTITY	DESCRIPTION
10	4	PIPE SUPPORT
11	1	1 1/2" FL BYPASS METER BY MAGNA WATER DISTRICT
12	-	1 1/2" COPPER PIPE
13	-	POLYPROPYLENE MANHOLE STEPS
14	2	M4 SOLID SLEEVES W/ MEGA LUG RESTRAINTS
15	1	8" OR 10" FL x 4" THREADED
16	1	4" THREADED BRASS PLUG
17	1	8" OR 10" FL x PE DI PIPE
18	1	8" OR 10" FL x PE DI PIPE

NOTE:  
 CAST-IN-PLACE BOX SHOWN. PRECAST BOX ALTERNATE SUBJECT TO FOLLOWING:  
 1. H-20 LOADING  
 2. SUBMERGENCE DEPTH OF 8 FEET.  
 3. NO HORIZONTAL JOINTS THROUGH THE PIPE OPENINGS.  
 4. WATER STOP @ WALL/FLOOR JOINT.

**MAGNA WATER DISTRICT**  
 8885 WEST 3500 SOUTH  
 MAGNA, UTAH, 84044  
 801-250-2118

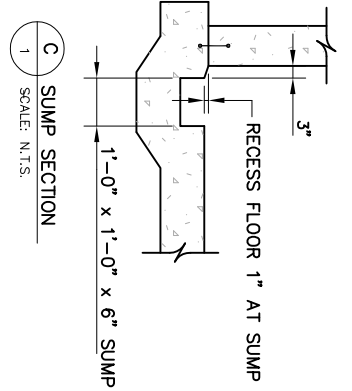
**8 & 10-INCH WATER METER VAULT**

DEPARTMENT  
**ENGINEERING**  
 STANDARD DETAIL **13** REVISION **JULY 2020** DRAWING NO. **1 OF 2**

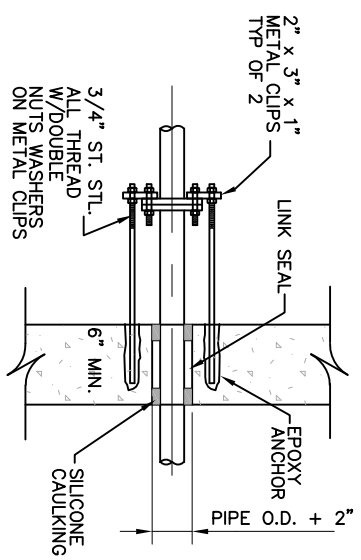


- NOTES:
- HOT DIP GALVANIZE AFTER FABRICATION.
  - PIPE SHALL BE SCHEDULE 40.

**F** ADJUSTABLE PIPE SUPPORT  
1 N.T.S.



**C** SUMP SECTION  
1 SCALE: N.T.S.

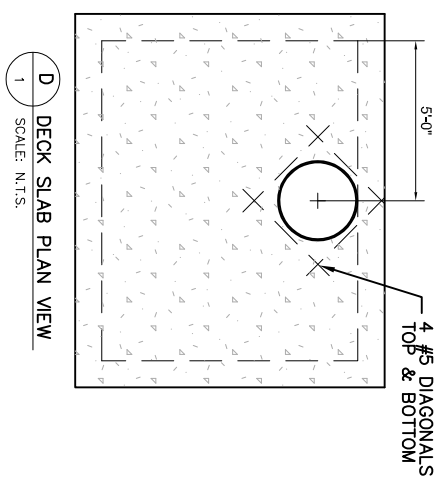


**E** THRUST RESTRAINT  
1 TYP. INLET & OUTLET PIPES  
SCALE: N.T.S.

PIPE SIZE	A	B	C	D	
				MINIMUM	MAXIMUM
*2 1/2	2 1/2	1 1/2	9	8	13
3	2 1/2	1 1/2	9	8 1/2	13 1/2
3 1/2	2 1/2	1 1/2	9	8 1/2	13 1/2
4	3	2 1/2	9	9 1/2	14
6	3	2 1/2	9	10 1/2	15 1/2
8	3	2 1/2	9	11 1/2	16 1/2
10	3	2 1/2	9	13 1/2	18 1/2
12	3	2 1/2	9	15	19 1/2

\* USE 2 1/2" SUPPORTS FOR PIPE LESS THAN 2 1/2"φ

ADJUSTABLE PIPE SADDLE SUPPORT SCHEDULE DIMENSIONS IN INCHES



**D** DECK SLAB PLAN VIEW  
1 SCALE: N.T.S.

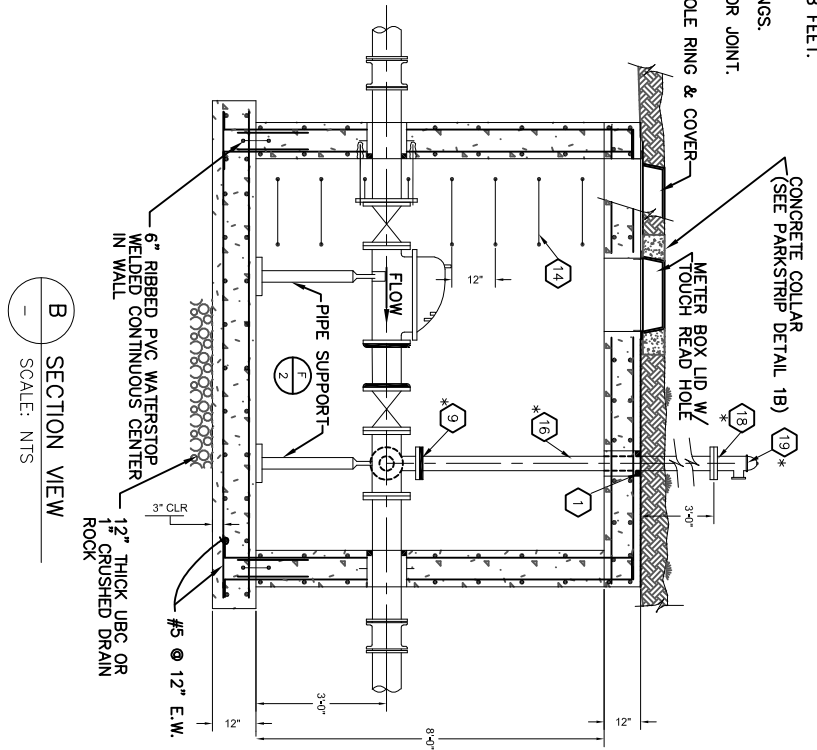
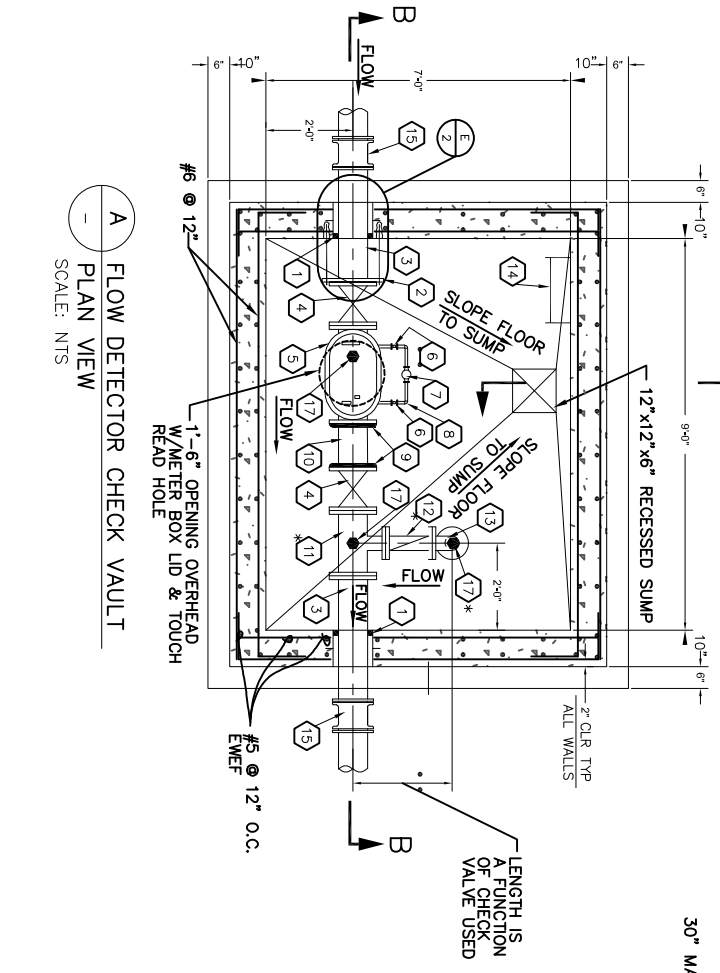
**MAGNA** WATER DISTRICT  
8885 WEST 3500 SOUTH  
MAGNA, UTAH, 84044  
801-250-2118

8 & 10-INCH WATER  
METER VAULT

DEPARTMENT  
**ENGINEERING**  
STANDARD DETAIL  
13  
REVISION  
JULY 2020  
DRAWING NO.  
2 OF 2

NOTES:  
 VAULT FITTINGS MAY BE 6" OR 8"  
 FITTINGS WITH "\*" REQD. PER  
 FIRE MARSHALS REQUEST  
 IF NOT REQD. INSTALL BLIND FLANGE  
 DESIGN CRITERIA  
 -LOADING: H-20  
 -WATER LEVEL @ SURFACE

NOTE:  
 CAST-IN-PLACE BOX SHOWN. PRECAST BOX  
 ALTERNATE SUBJECT TO FOLLOWING:  
 1. H-20 LOADING  
 2. SUBMERGENCE DEPTH OF 8 FEET.  
 3. NO HORIZONTAL JOINTS,  
 THROUGH THE PIPE OPENINGS.  
 4. WATER STOP @ WALL/FLOOR JOINT.



A FLOW DETECTOR CHECK VAULT  
 PLAN VIEW  
 SCALE: NTS

B SECTION VIEW  
 SCALE: NTS

MARK	DESCRIPTION
1	GALV. PIPE SLEEVE WITH 3" SEEP RING AND "LINK SEAL."
2	THRUST RESTRAINTSEE (E)
3	FLAPE PIPE
4	GATE VALVE FLANGED
5	DETECTOR CHECK VALVE FLANGED. BRONZE FITTED W/ BY PASS METER
6	3/4" BALL VALVE SCREWED
7	3/4" SERVICE METER W/TOUCH READ (BY DISTRICT)
8	3/4" BRASS PIPING SCREWED
9	GROOVED FLANGED ADAPTOR, OR BLIND FLANGE

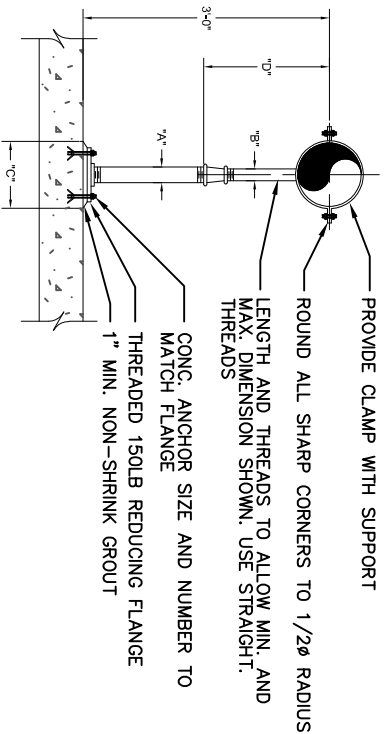
MARK	DESCRIPTION
10	GROOVED END PIPE
11	8"x8"x4" OR 6"x6"x4" FL TEE
12	4" SWING CHECK VALVE FLANGED (BRONZED FITTED)
13	FL BASE 90° BEND
14	POLYPROPYLENE MH STEPS @ 12" O.C.

MARK	DESCRIPTION
15	MJ SOLID SLEEVE W/MEGA LUG RESTRAINTS
16	4" FLAGROOVED END PIPE
17	PIPE SUPPORT
18	4" BLIND FLANGE W/THREADED HOLE & THREADED NIPPLE
19	2 1/2" x 2 1/2" x 4" BRONZE 90° FIRE DEPARTMENT CONNECTION

**MAGNA WATER DISTRICT**  
 8885 WEST 3500 SOUTH  
 MAGNA, UTAH, 84044  
 801-250-2118

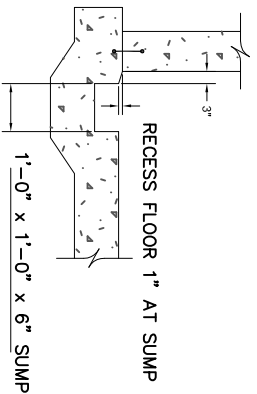
**6" & 8" FIRE FLOW  
 DETECTOR**

DEPARTMENT  
**ENGINEERING**  
 STANDARD DETAIL  
 REVISION  
**14 JULY 2020**  
 DRAWING NO.  
**1 OF 2**

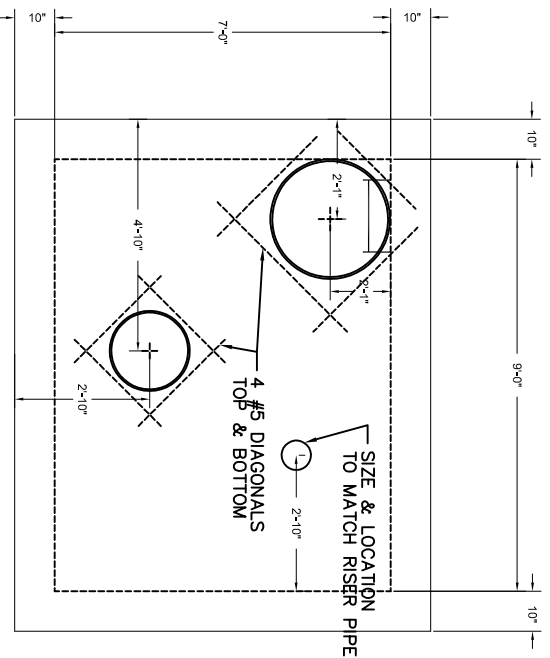


- NOTES:
- HOT DIP GALVANIZE AFTER FABRICATION.
  - PIPE SHALL BE SCHEDULE 40.

**F** ADJUSTABLE PIPE SUPPORT  
1 N.T.S.



**C** SUMP SECTION  
1 SCALE: 1/2" = 1'-0"

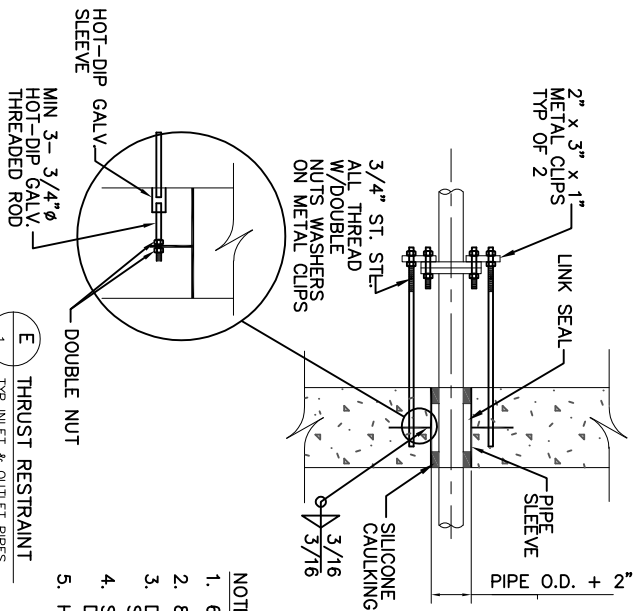


**D** DECK SLAB PLAN VIEW  
1 SCALE: 1/4" = 1'-0"

ADJUSTABLE PIPE SADDLE SUPPORT SCHEDULE DIMENSIONS IN INCHES

PIPE SIZE	A	B	C	D	
				MINIMUM	MAXIMUM
*2 1/2	2 1/2	1 1/2	9	8	13
3	2 1/2	1 1/2	9	8 1/2	13 1/2
3 1/2	2 1/2	1 1/2	9	8 1/2	13 1/2
4	3	2 1/2	9	9 1/2	14
6	3	2 1/2	9	10 1/2	15 1/2
8	3	2 1/2	9	11 1/2	16 1/2
10	3	2 1/2	9	13 1/2	18 1/2
12	3	2 1/2	9	15	19 1/2

\* USE 2 1/2" SUPPORTS FOR PIPE LESS THAN 2 1/2"Ø



**E** THRU RESTRAINT  
1 TYP INLET & OUTLET PIPES  
SCALE: 3/4" = 1'-0"

- NOTES:
- 6" & SMALLER = SCH 40 STL PIPE
  - 8" & SMALLER = 1/4" THICK STL PIPE
  - DIA. OF SLEEVE AS PER LINK SEAL MANUFACTURE REC.
  - SEEP RING = 1/4" THICK STL PLATE DIA. AS REQ'D.
  - HOT-DIP GALVANIZE SLEEVE AFTER FABRICATION

8885 WEST 3500 SOUTH  
MAGNA, UTAH, 84044  
801-250-2118

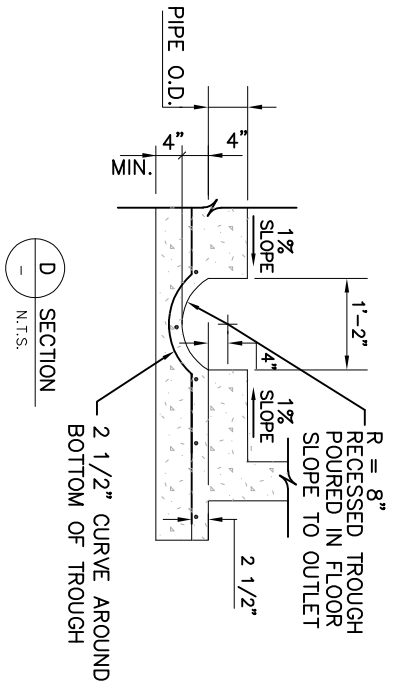
6" & 8" FIRE FLOW  
DETECTOR

DEPARTMENT  
**ENGINEERING**

STANDARD DETAIL  
14

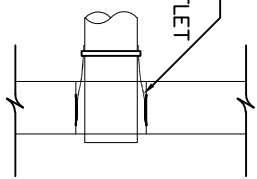
REVISION  
JULY 2020

DRAWING NO.  
2 OF 2

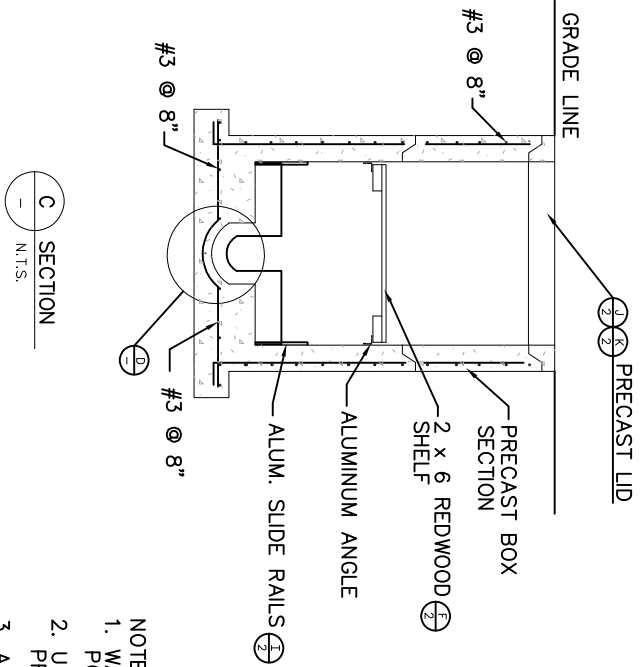


D SECTION  
N.T.S.

MANHOLE RUBBER BOOT TYP. INLET & OUTLET

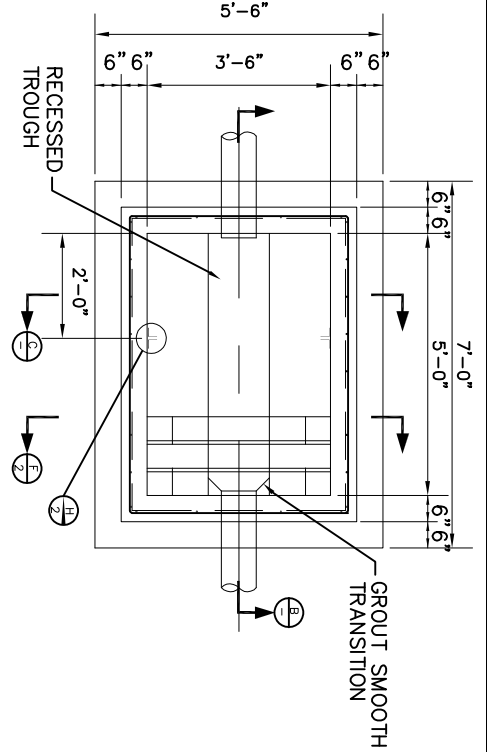


E RUBBER BOOT  
N.T.S.

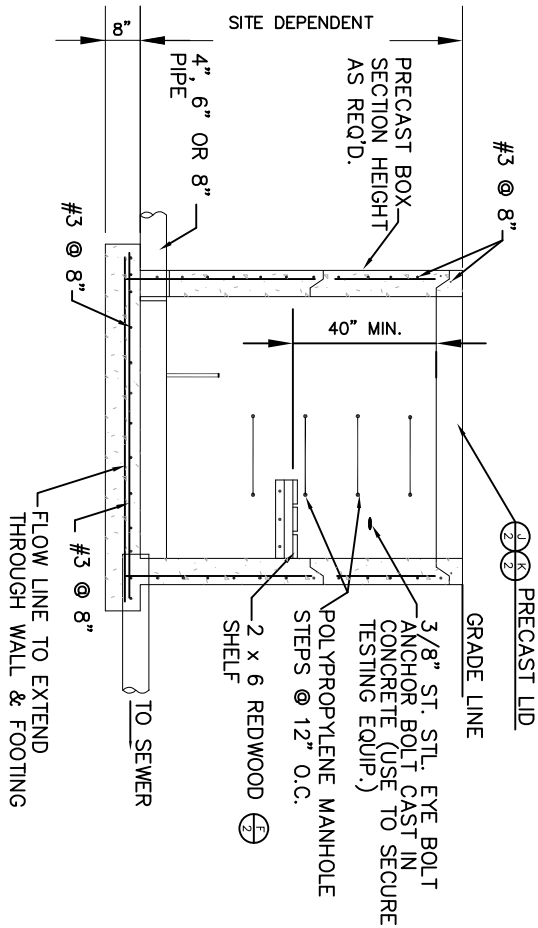


C SECTION  
N.T.S.

- NOTES:
1. WALLS & FLOOR POURED MONOLITHIC
  2. USE MASTIC AT PRECAST JOINTS.
  3. ALL JOINTS TO BE WATER TIGHT.



A SECTION  
N.T.S.



B SECTION  
N.T.S.



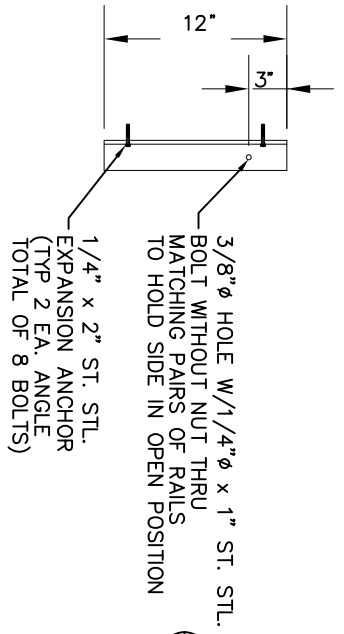
8885 WEST 3500 SOUTH  
MAGNA, UTAH, 84044  
801-250-2118

SAMPLE VAULT

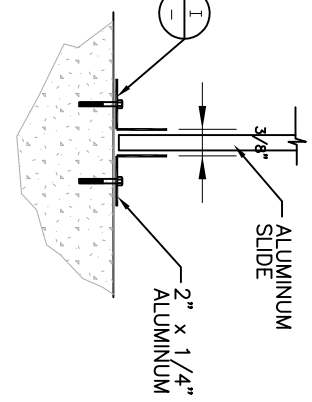
ENGINEERING

DEPARTMENT

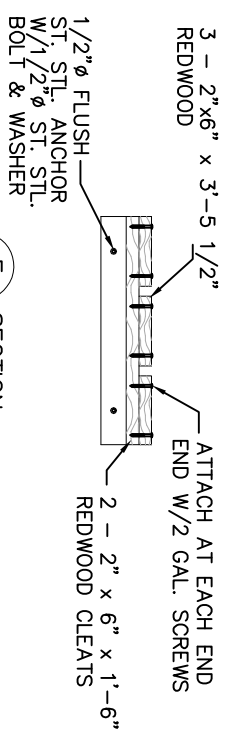
STANDARD DETAIL 15 REVISION JULY 2020 DRAWING NO. 1 OF 2



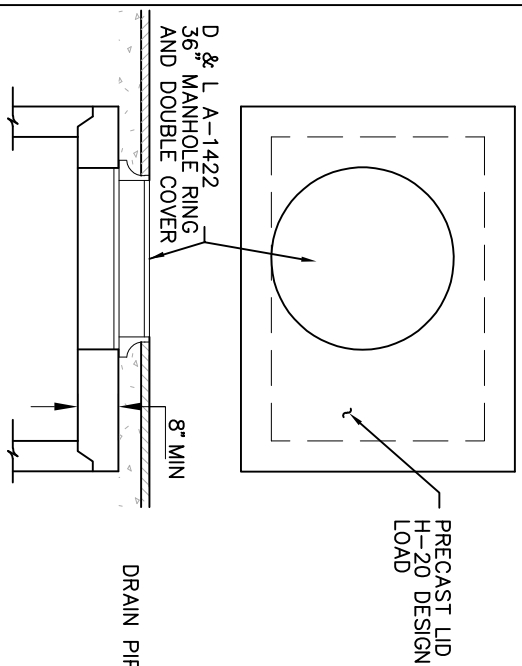
I ALUMINUM SLIDE RAILS  
1 N.T.S. (TYP OF 4)



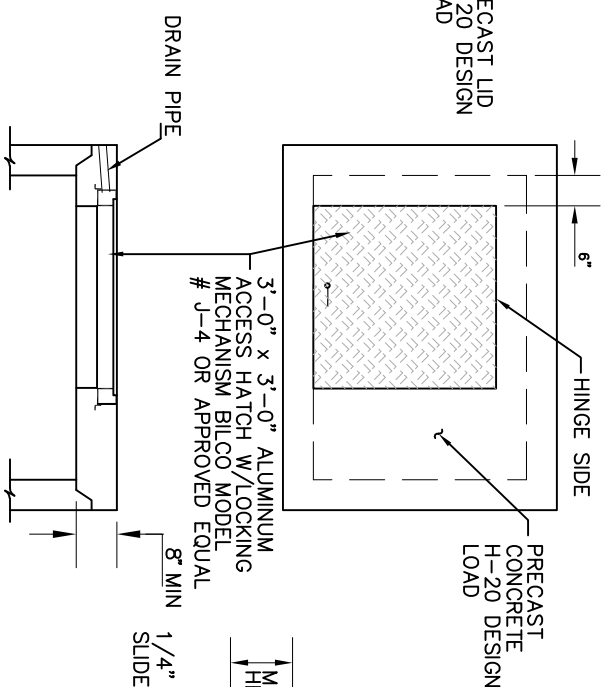
H DETAIL  
1 N.T.S.



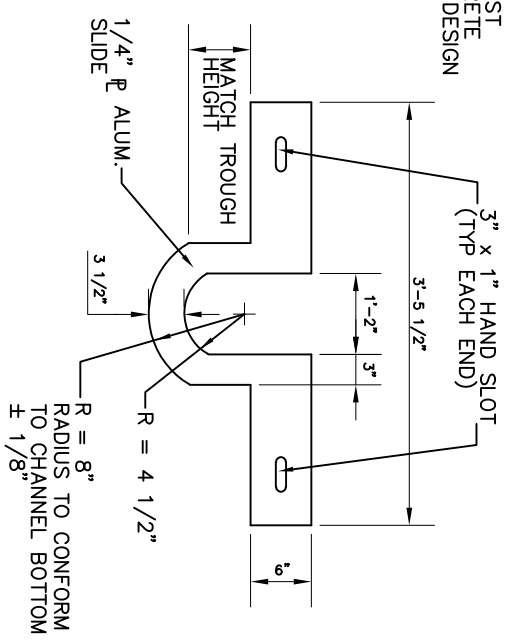
F SECTION  
1 N.T.S.



J TRAVELED LID  
1 N.T.S.



K NON TRAVELED LID  
1 N.T.S.

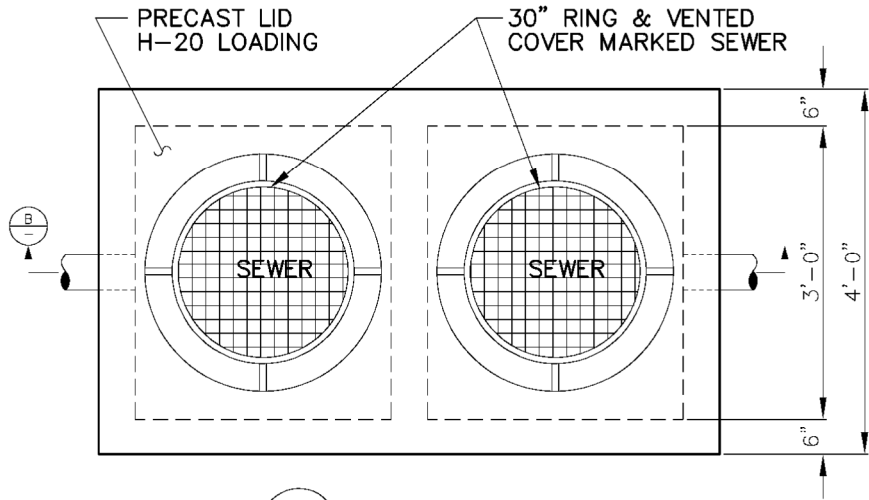


G ALUMINUM SLIDE  
1 N.T.S.

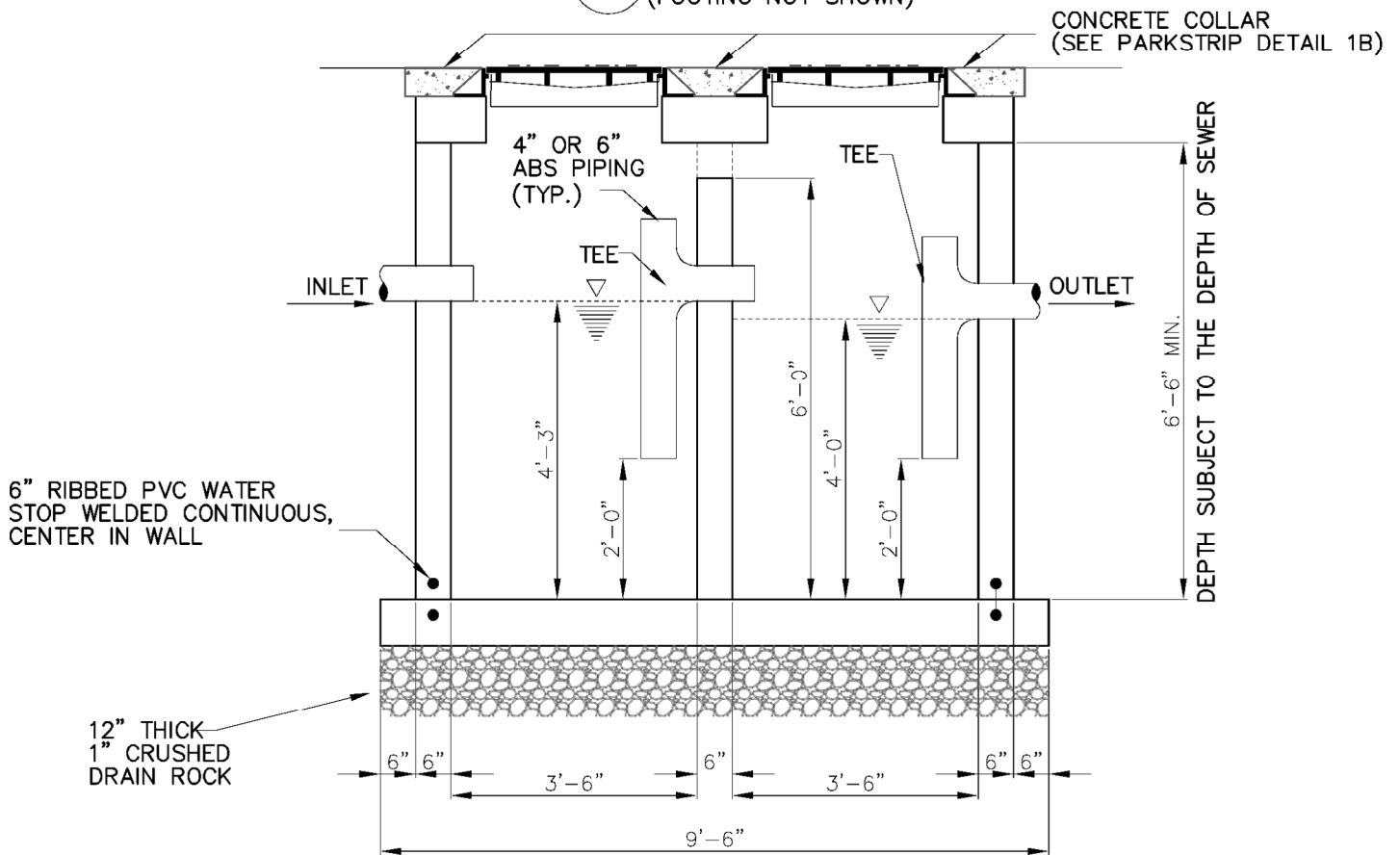
**MAGNA**  
WATER DISTRICT  
8885 WEST 3500 SOUTH  
MAGNA, UTAH, 84044  
801-250-2118

SAMPLE VAULT

DEPARTMENT  
**ENGINEERING**  
STANDARD DETAIL  
REVISION  
15 JULY 2020  
DRAWING NO.  
2 OF 2



(A) PLAN VIEW  
(FOOTING NOT SHOWN)



(B) SECTION

**PRECAST BOX DESIGN CRITERIA**

- 1) H-20 LOADING.
- 2) WALLS SUBJECT TO SUBMERGENCE DEPTH OF 8 FEET.
- 3) NO HORIZONTAL JOINTS THROUGH THE PIPE OPENINGS.
- 4) WATERSTOP AT WALL/FLOOR JOINTS.

**OIL & GREASE SEPARATOR  
800 TO 1000 GALLON CAPACITY**

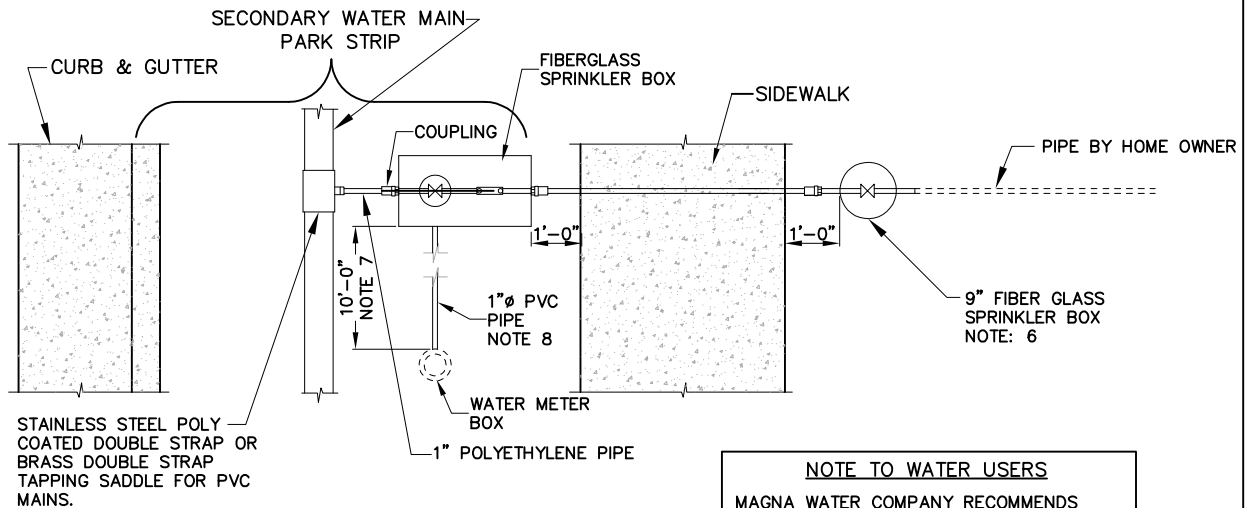


8885 WEST 3500 SOUTH  
MAGNA, UTAH, 84044  
801-250-2118

**OIL & GREASE SEPARATOR**

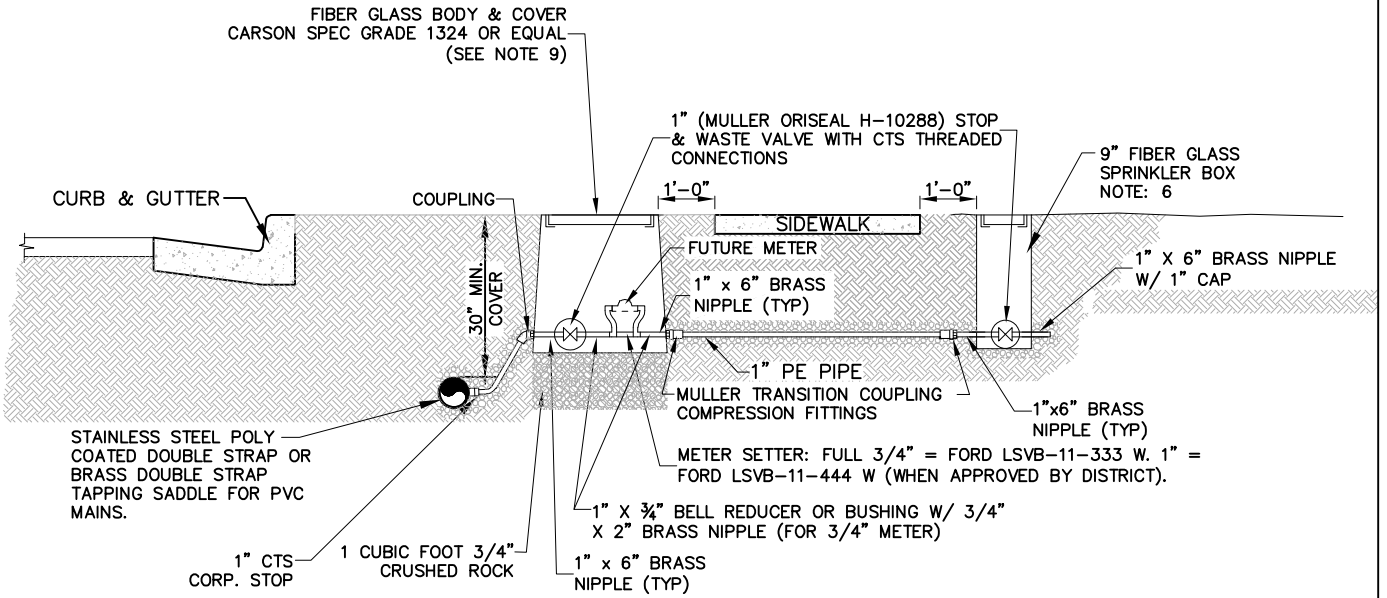
DEPARTMENT <b>ENGINEERING</b>	
STANDARD DETAIL <b>16</b>	REVISION <b>JULY 2020</b>





PLAN VIEW

**NOTE TO WATER USERS**  
 MAGNA WATER COMPANY RECOMMENDS PRIVATE WATER USERS INSTALL FILTERS DUE TO THE NATURE OF SECONDARY WATER



ELEVATION

NOTES:

- 1) SERVICES MAY BE TUNNELED OR JETTED UNDER CURB & GUTTER, DRIVEWAYS, OR SIDEWALKS.
- 2) POLYETHYLENE PIPE SHALL BE SDR-9-PE 3408 MANUFACTURED TO MEET THE REQUIREMENTS OF ASTM D-2737. ALL PIPE SHALL BE COLORED PURPLE.
- 3) ALL PVC MAIN LINE OR PE SERVICE PIPE SHALL BE INSTALLED WITH LOCATOR TAPE OR WIRE.
- 4) MINIMUM DISTANCE BETWEEN SERVICE TAPS SHALL BE 24" OFF CENTER.
- 5) METER SHALL BE SUPPLIED BY MAGNA WATER DISTRICT.
- 6) SHALL BE SPECIFICATION GRADE VALVE BOX 10" TOP 13" BOTTOM X 10 1/4" DEEP OR EQUIVALENT SIZE.
- 7) MAXIMUM DISTANCE BETWEEN METER BOXES SHALL BE 10'-0" UNLESS APPROVED BY MAGNA WATER DISTRICT.
- 8) PVC LINE SHALL BE INSTALLED BETWEEN METER BOXES FOR COMMUNICATION CABLE.
- 9) INSTALL CONCRETE METER BOX IN TRAFFICKED AREAS AS DETERMINED BY THE DISTRICT INSPECTOR



8885 WEST 3500 SOUTH  
 MAGNA, UTAH, 84044  
 801-250-2118

SECONDARY SINGLE WATER SERVICE CONNECTION DETAIL

DEPARTMENT

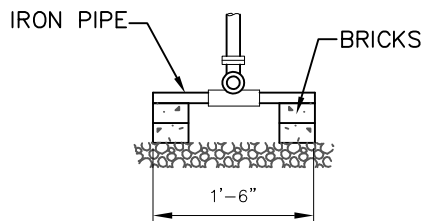
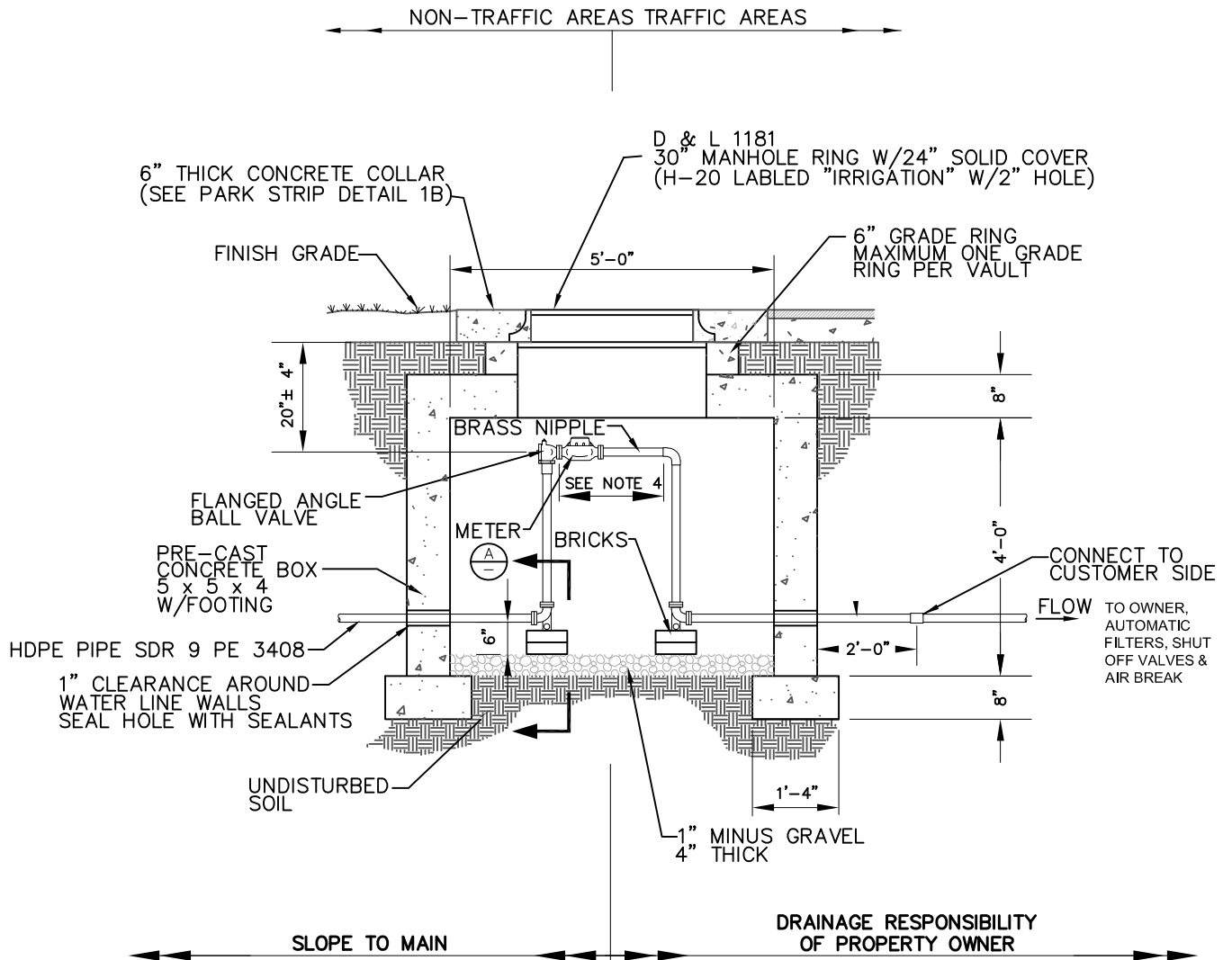
ENGINEERING

STANDARD DETAIL

17

REVISION

JULY 2020



**A** SECTION  
- N.T.S.

**NOTES:**

1. ALL WORK MUST BE INSPECTED BY MAGNA WATER DISTRICT PRIOR TO BACKFILL.
2. CENTER MANHOLE OVER THE METER.
3. METER SUPPLIED BY MAGNA WATER DISTRICT.
4. METER LAYING LENGTH AS PER TABLE.
5. INSTALL TRACER WIRE FROM MAIN TO METER SETTER

WATER METER SETTER		
METER SIZE	FORD MODEL #	MUELLER MODEL #
1 1/2"	VB76-24-44-66	B-2422
2"	VB77-24-44-77	B-2422

METER SIZE	LAYING LENGTH
1 1/2" TURBINE METER	13 1/4"
2" TURBINE METER	17 1/4"



8885 WEST 3500 SOUTH  
MAGNA, UTAH, 84044  
801-250-2118

**SECONDARY WATER 1-1/2" & 2" METER VAULT**

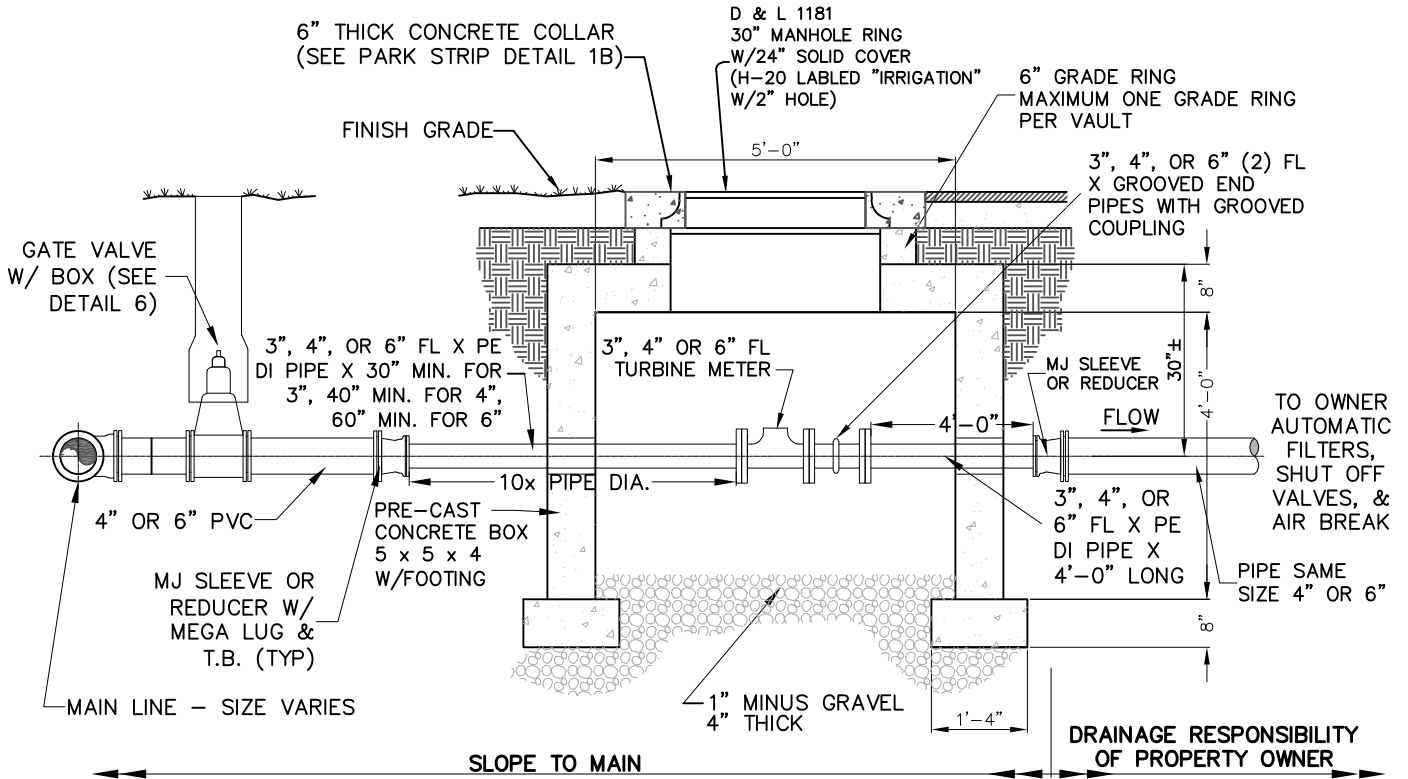
DEPARTMENT	
<b>ENGINEERING</b>	
STANDARD DETAIL <b>18</b>	REVISION <b>JULY 2020</b>

NOTES:

1. ALL WORK MUST BE INSPECTED BY MAGNA WATER DISTRICT PRIOR TO BACKFILL.
2. CENTER MANHOLE OVER THE METER.
3. METER SUPPLIED BY MAGNA WATER DISTRICT.
4. METER LAYING LENGTH AS PER TABLE.

METER SIZE	LAYING LENGTH
3" TURBINE METER	10"
4" TURBINE METER	14"
6" TURBINE METER	18"

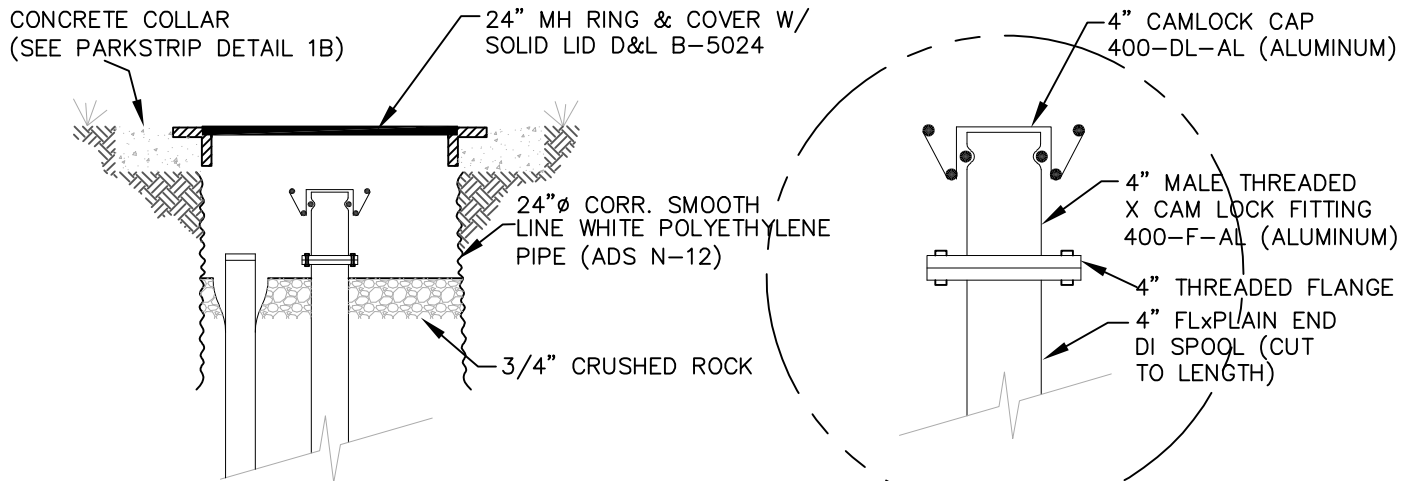
5. BOLTS TO BE CADNIUM PLATED.



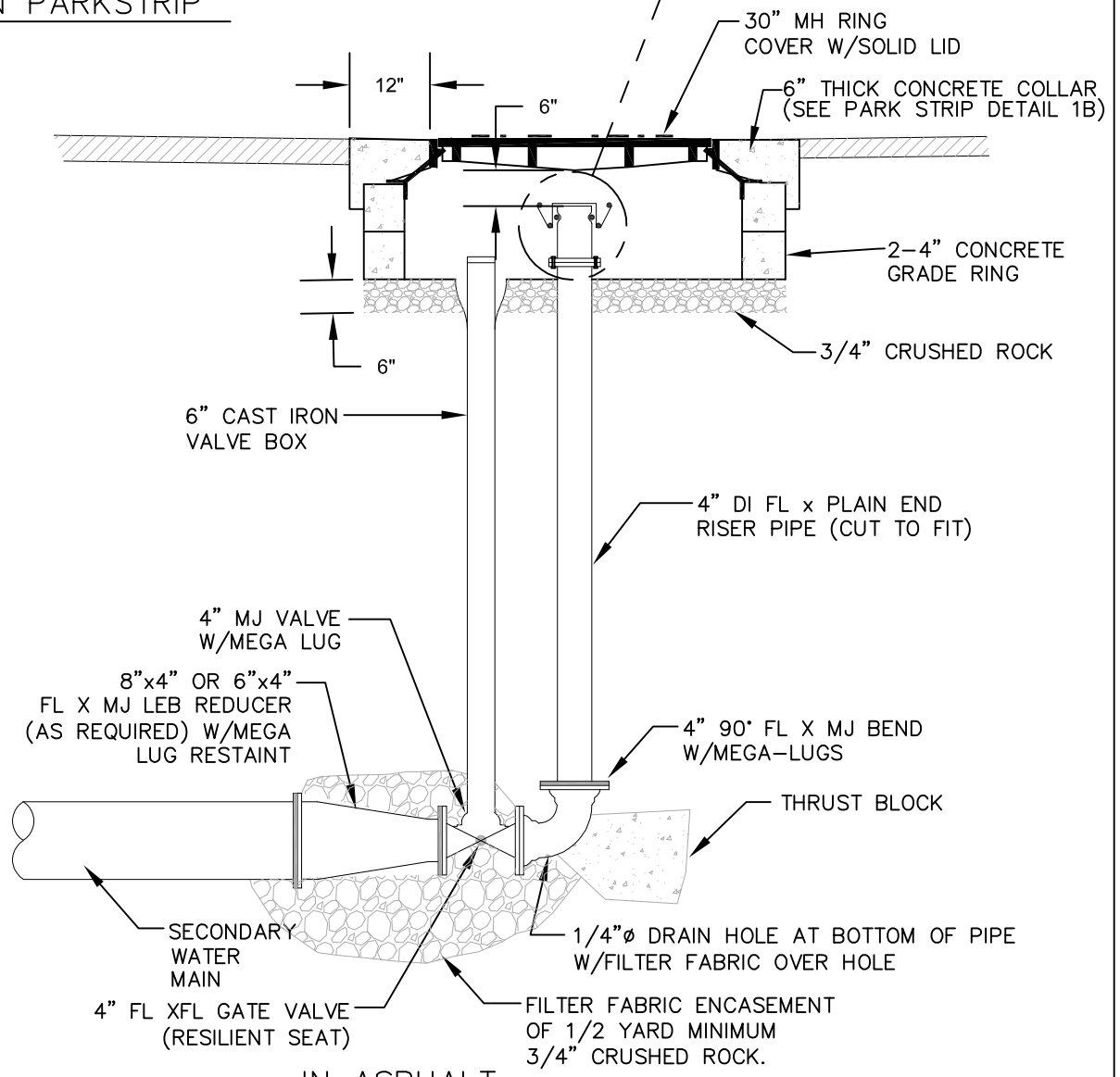
8885 WEST 3500 SOUTH  
MAGNA, UTAH, 84044  
801-250-2118

SECONDARY WATER 3", 4"  
OR 6" METER VAULT

DEPARTMENT	
<b>ENGINEERING</b>	
STANDARD DETAIL	REVISION
19	JULY 2020



IN PARKSTRIP



IN ASPHALT

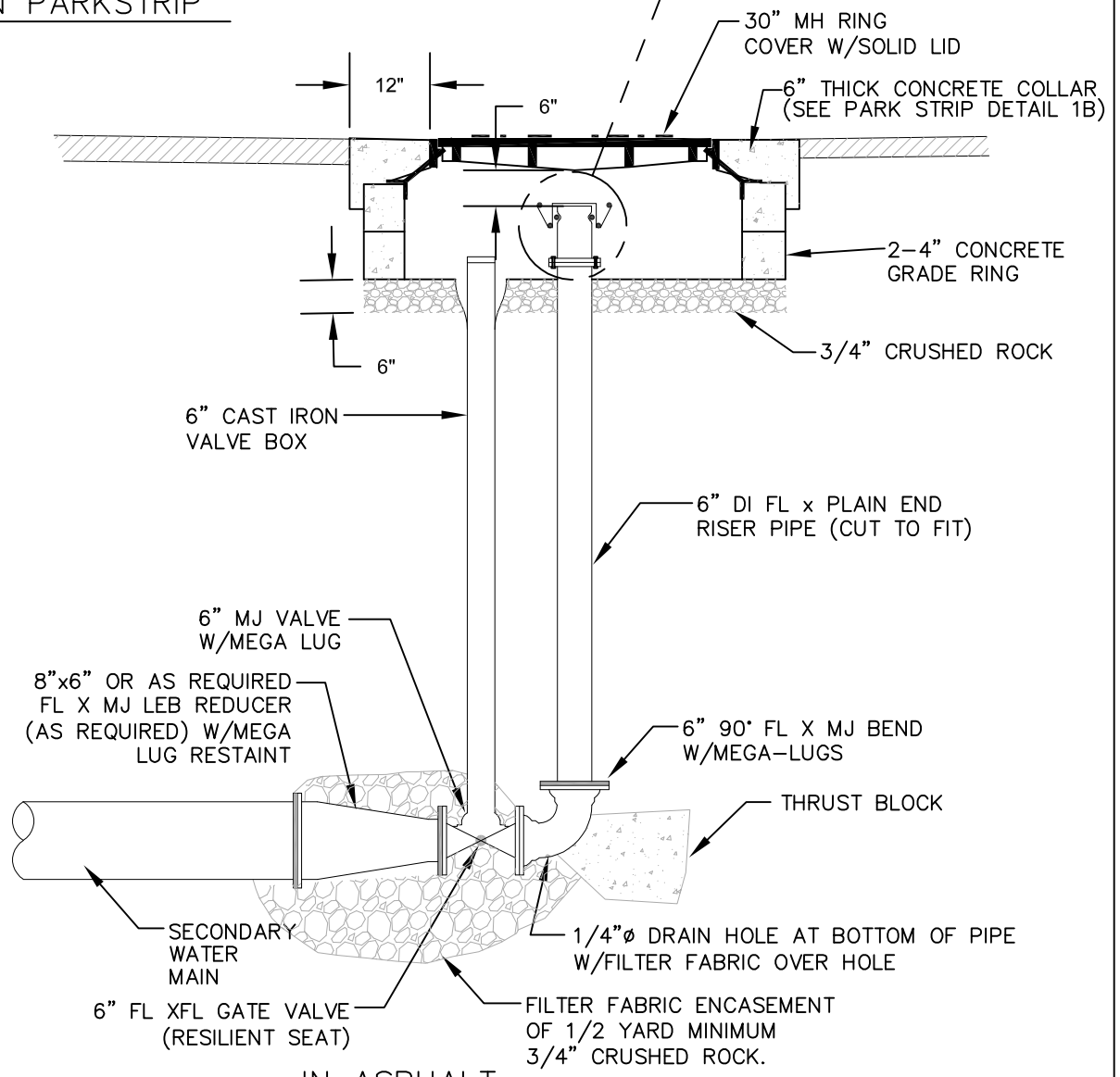
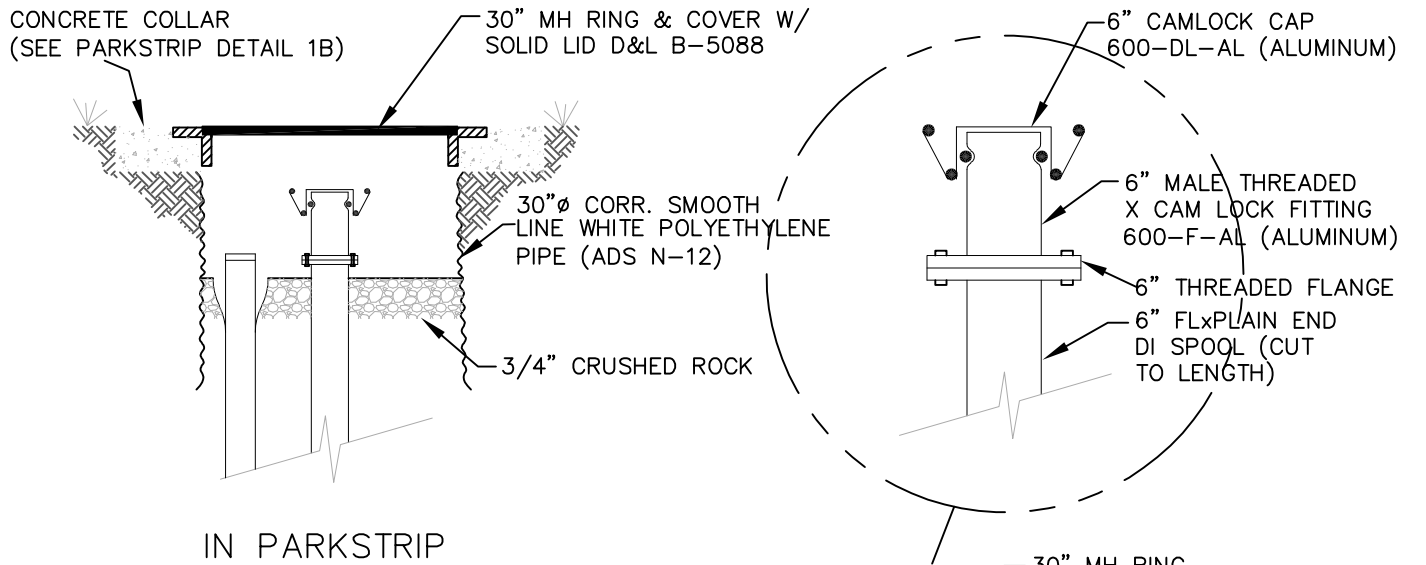
NOTE:  
 \* REDUCER SIZE ACCORDING TO SIZE OF MAIN  
 \*\* ALL JOINTS TO BE MEGA-LUGGED.  
 \*\*\* BLOW-OFFS SHALL BE INSTALLED ON BOTH ENDS OF DRY MAIN



8885 WEST 3500 SOUTH  
 MAGNA, UTAH, 84044  
 801-250-2118

4" BLOW-OFF

DEPARTMENT	
ENGINEERING	
STANDARD DETAIL	REVISION
20	JULY 2020



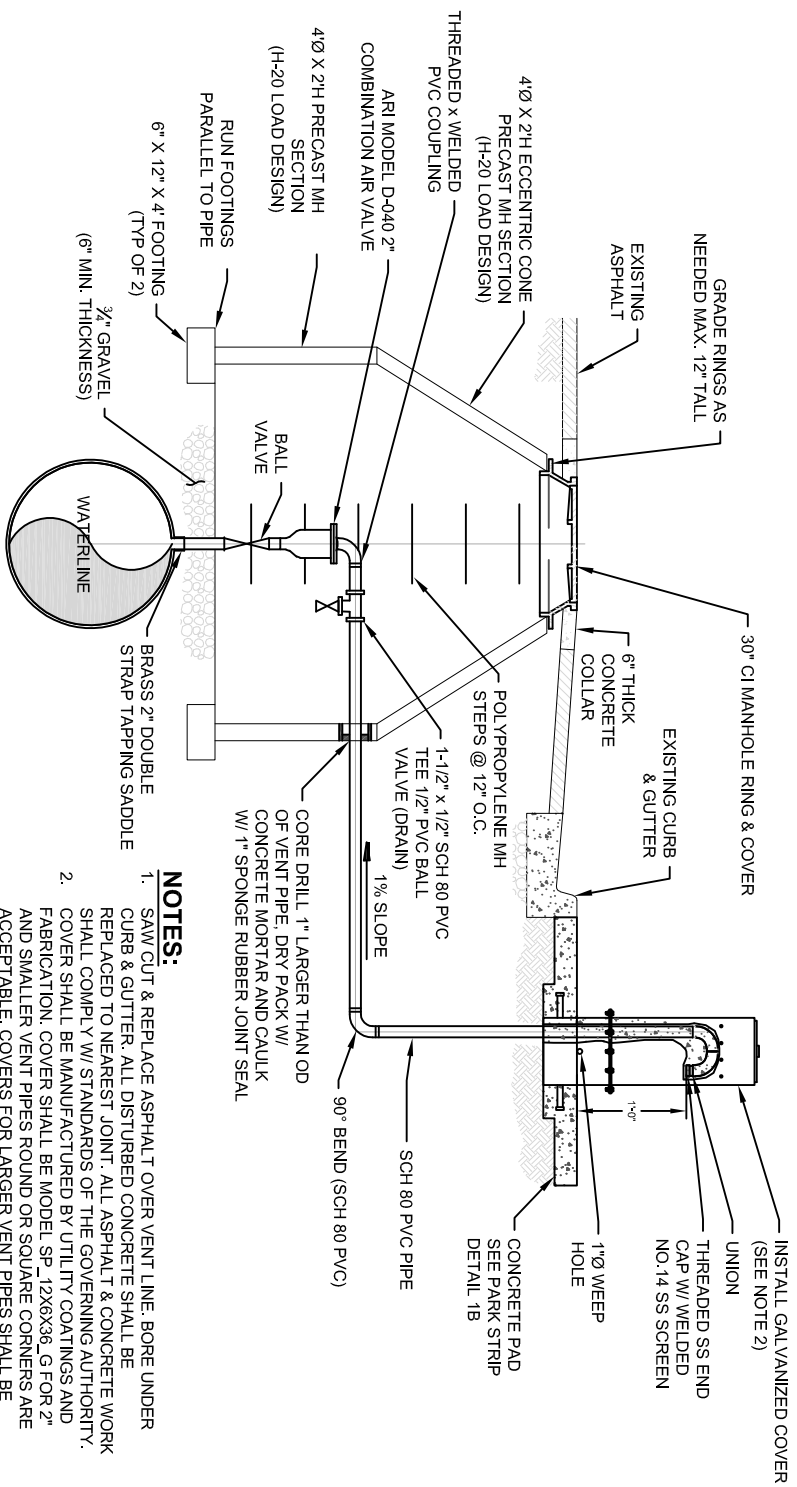
NOTE:  
 \* REDUCER SIZE ACCORDING TO SIZE OF MAIN  
 \*\* ALL JOINTS TO BE MEGA-LUGGED.  
 \*\*\* BLOW-OFFS SHALL BE INSTALLED ON BOTH ENDS OF DRY MAIN



8885 WEST 3500 SOUTH  
 MAGNA, UTAH, 84044  
 801-250-2118


6" BLOW-OFF

DEPARTMENT	
ENGINEERING	
STANDARD DETAIL	REVISION
21	JULY 2020



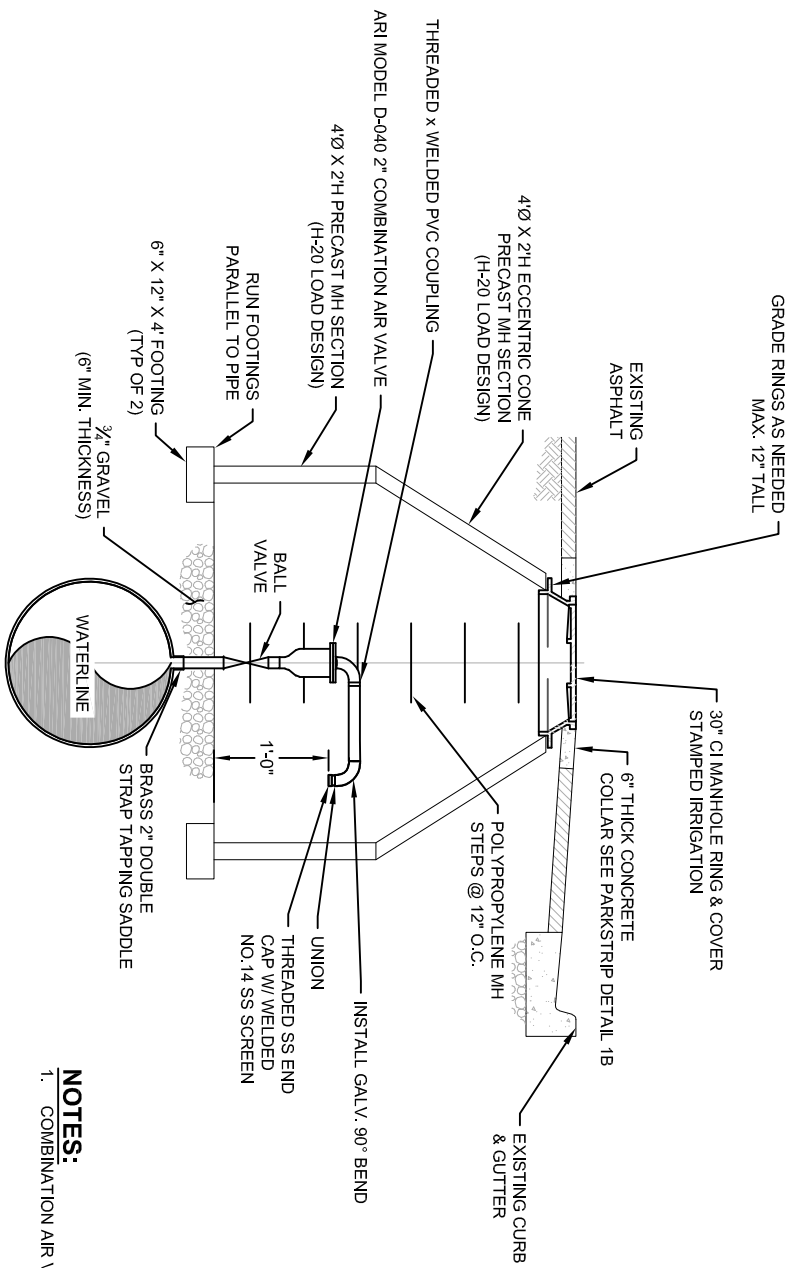
**NOTES:**

1. SAW CUT & REPLACE ASPHALT OVER VENT LINE. BORE UNDER CURB & GUTTER. ALL DISTURBED CONCRETE SHALL BE REPLACED TO NEAREST JOINT. ALL ASPHALT & CONCRETE WORK SHALL COMPLY W/ STANDARDS OF THE GOVERNING AUTHORITY.
2. COVER SHALL BE MANUFACTURED BY UTILITY COATINGS AND FABRICATION. COVER SHALL BE MODEL SP\_12X6X36\_G FOR 2" AND SMALLER VENT PIPES ROUND OR SQUARE CORNERS ARE ACCEPTABLE. COVERS FOR LARGER VENT PIPES SHALL BE CUSTOM MANUFACTURED.
3. RESTORE ALL DISTURBED VEGETATION, LANDSCAPING, & OTHER SURFACE FEATURES.
4. COMBINATION AIR VALVE TO BE SIZED BY DISTRICT ENGINEER



  
 8885 WEST 3500 SOUTH
   
 MAGNA, UTAH, 84044
   
 801-250-2118

CULINARY WATER
   
 AIR VAC VALVE

DEPARTMENT
   
**ENGINEERING**
  
 STANDARD DETAIL
   
 REVISION
   
**22**
  
**JULY 2020**



**NOTES:**  
 1. COMBINATION AIR VALVE TO BE SIZED BY DISTRICT ENGINEER



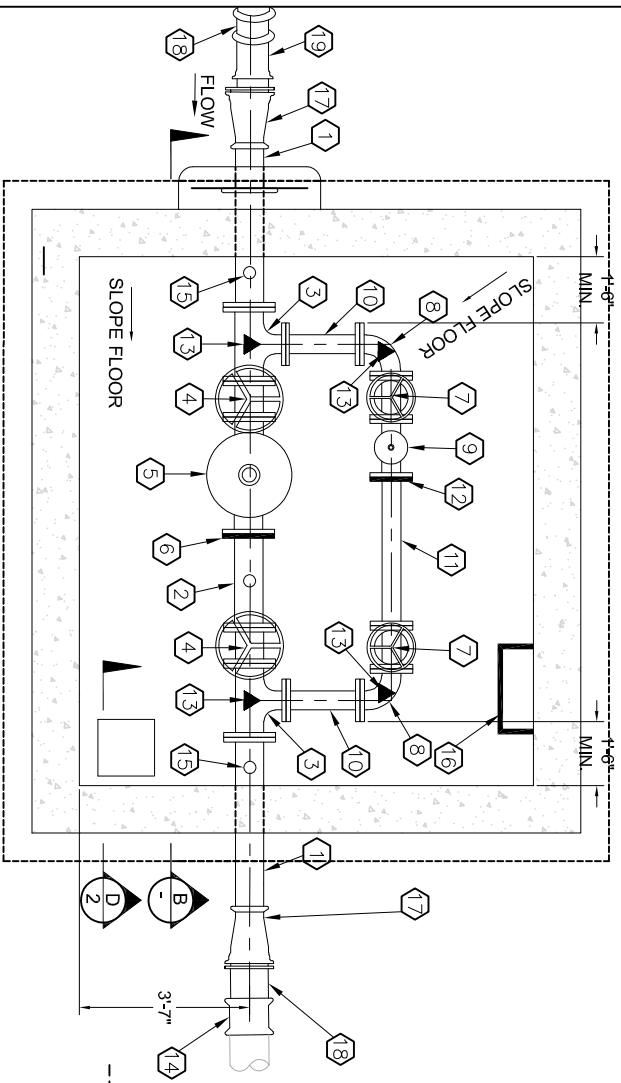
8885 WEST 3500 SOUTH  
 MAGNA, UTAH, 84044  
 801-250-2118

SECONDARY WATER AIR  
 VAC VALVE

DEPARTMENT  
**ENGINEERING**

STANDARD DETAIL  
**23**

REVISION  
**JULY 2020**



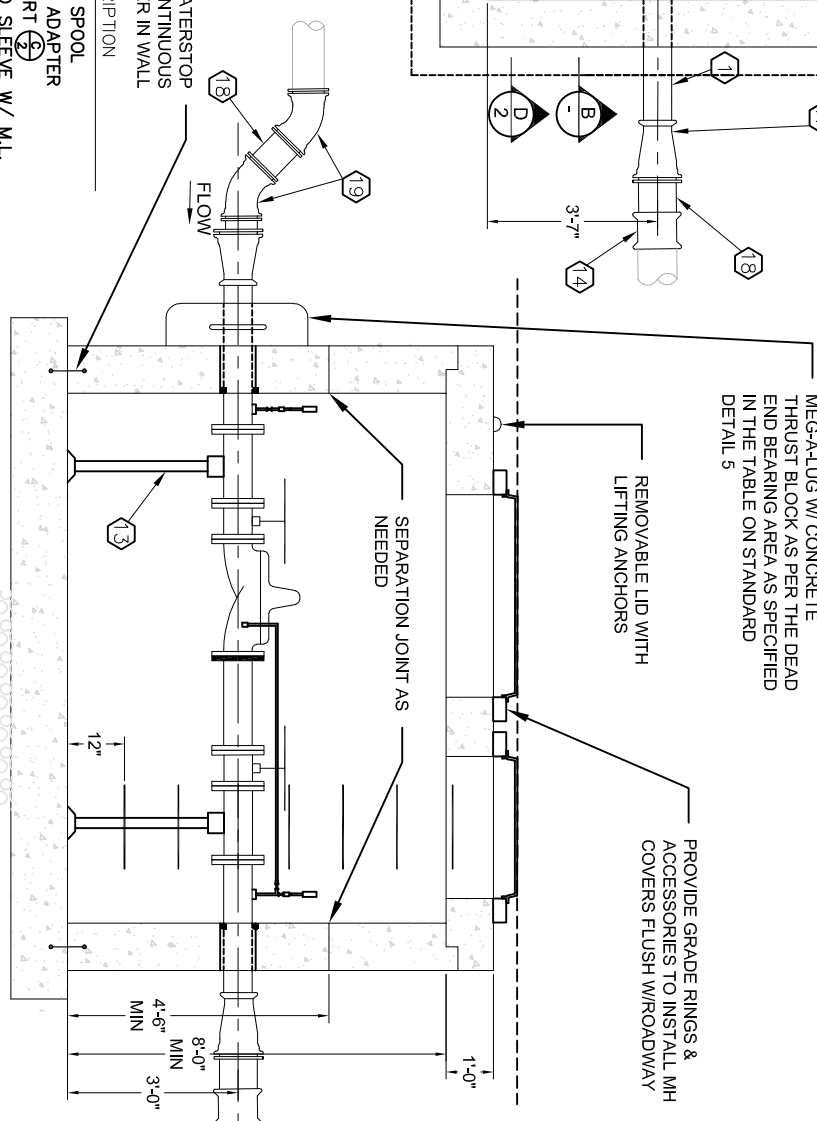
**A** PRV VAULT PLAN VIEW  
N.T.S.

PIPE & FITTING VARIABLES	
X	MAIN DIAMETER
Y	HIGH FLOW PRV
Z	LOW FLOW PRV

DETERMINED BY DISTRICT ENGINEER

MARK	QUANTITY	DESCRIPTION
1	2	Y" FL x PE DI PIPE
2	1	Y" FL x GE SPOOL
3	2	Y" x Z" FL TEE
4	2	Y" FL GATE VALVE
5	1	Y" FL PRV (OWNER SUPPLIED)
6	1	Y" FL x GE ADAPTER
7	2	Z" FL GATE VALVE
8	2	Z" FL 90° BEND
9	1	Z" FL PRV (OWNER SUPPLIED)
10	2	Z" FL SPOOL

MARK	QUANTITY	DESCRIPTION
11	1	Z" FL x GE SPOOL
12	1	Z" FL x GE ADAPTER
13	13	PIPE SUPPORT
14	4	X" MJ SOLID SLEEVE W/ M.L.
15	2	PRESSURE GAUGE DETAIL
16	-	POLYPROPYLENE MANHOLE STEPS (12" O.C.)
17	2	X" x Y" MJ REDUCER W/ M.L.
18	1	X" DI SPOOL
19	2	X" MJ 45° BEND W/ M.L.
20	X	XXX



**B** PROFILE VIEW  
N.T.S.

- NOTES:
- PRECAST BOX SUBJECT TO FOLLOWING:
    - H-20 LOADING
    - SUBMERGENCE DEPTH OF 8 FEET
    - NO HORIZONTAL JOINTS THROUGH THE PIPE OPENINGS.
    - WATER STOP @ WALL/FLOOR JOINT.
  - FLANGES TO BE 250 PSI ANSI FLANGES
  - ALL BOLTS TO BE STAINLESS STEEL
  - VAULT DIMENSIONS DESIGNED BY DISTRICT ENGINEER

8885 WEST 3500 SOUTH  
MAGNA, UTAH, 84044  
801-250-2118

PRV STATION

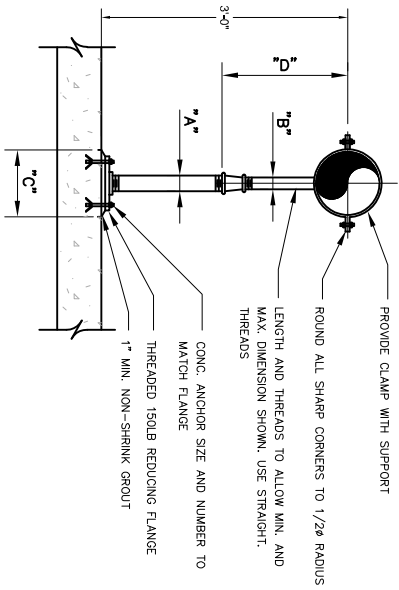
DEPARTMENT  
**ENGINEERING**

STANDARD DETAIL  
24

REVISION  
JULY 2020

DRAWING NO.  
1 OF 2





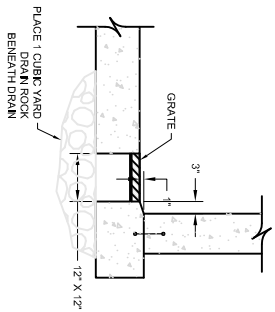
- NOTES:  
 1. HOT DIP GALVANIZE AFTER FABRICATION.  
 2. PIPE SHALL BE SCHEDULE 40.

**C** ADJUSTABLE PIPE SUPPORT  
 1 N.T.S.

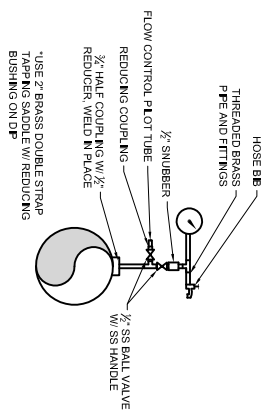
PIPE SIZE	A	B	C	D	
				MINIMUM	MAXIMUM
*2 1/2	2 1/2	1 1/2	9	8	13
3	2 1/2	1 1/2	9	8 1/2	13 1/2
3 1/2	2 1/2	1 1/2	9	8 1/2	13 1/2
4	3	2 1/2	9	9 1/2	14
6	3	2 1/2	9	10 1/2	15 1/2
8	3	2 1/2	9	11 1/2	16 1/2
10	3	2 1/2	9	13 1/2	18 1/2
12	3	2 1/2	9	15	19 1/2

\* USE 2 1/2" SUPPORTS FOR PIPE LESS THAN 2 1/2"

ADJUSTABLE PIPE SADDLE SUPPORT SCHEDULE DIMENSIONS IN INCHES

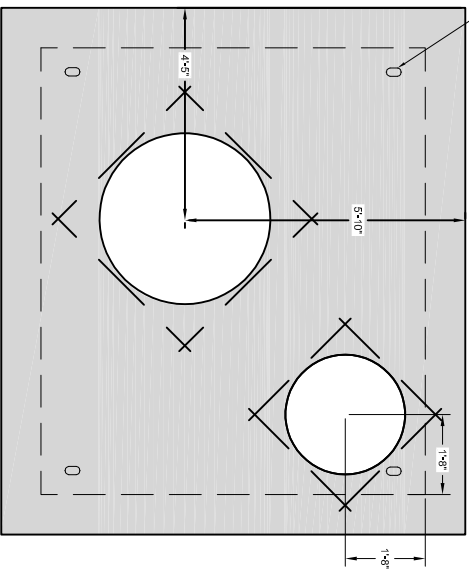


**D** DRAIN SECTION  
 1 N.T.S.



**E** PRESSURE GAUGE DETAIL  
 1 N.T.S.

ANCHOR TO REMOVE L.D. (TYP)



**F** DECK SLAB PLAN VIEW  
 1 N.T.S.

**MAGNA**  
 WATER DISTRICT  
 8885 WEST 3500 SOUTH  
 MAGNA, UTAH, 84044  
 801-250-2118

PRV STATION

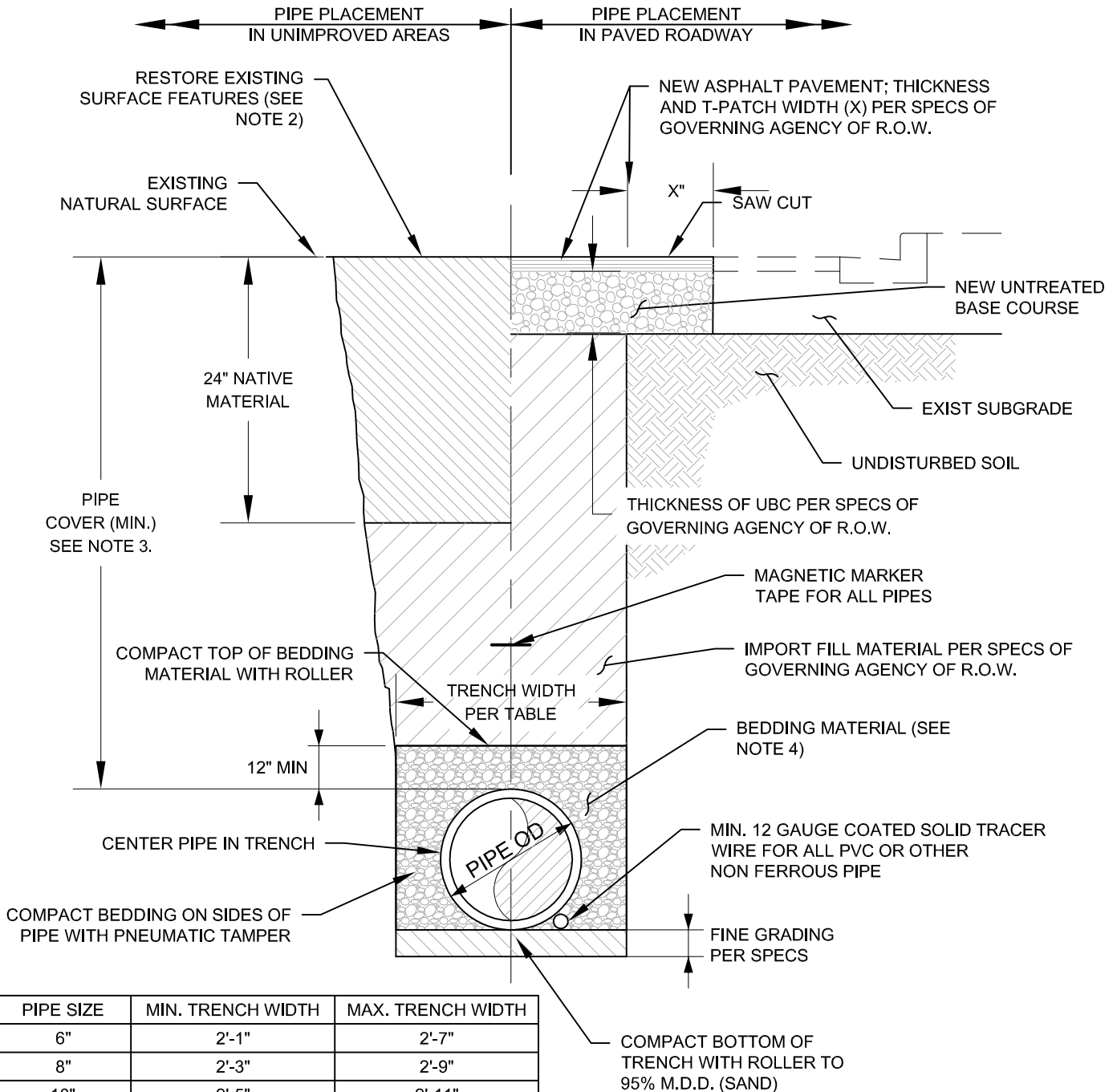
ENGINEERING

DEPARTMENT

STANDARD DETAIL 24  
 REVISION JULY 2020  
 DRAWING NO. 2 OF 2

**NOTES:**

1. SEE SPECS FOR SHORING REQUIREMENTS.
2. RESTORE ALL DISTURBED VEGETATION, LANDSCAPING, & OTHER SURFACE FEATURES.
3. CULINARY PIPE COVER MIN. OF 4'-0"  
SECONDARY PIPE COVER MIN. OF 2'-6"  
SEWER PIPE COVER MIN. OF 6'-6"
4. BEDDING MATERIAL SHALL BE SAND FOR SECONDARY WATERLINES AND CULINARY WATERLINES;  
BEDDING MATERIAL FOR SEWER PIPE SHALL BE  $\frac{3}{4}$ " DRAIN ROCK
5. DURING CONSTRUCTION, THE CONTRACTOR SHALL ENSURE THAT THE ENDS OF EACH SECTION OF CULINARY WATER PIPE HAVE BEEN SEALED BEFORE CREWS, LEAVE THE TRENCH AT THE END OF THE DAY, FOR LUNCH, OR FOR ANY OTHER EXTENDED PERIOD OF TIME. PLUGS SHALL BE RUBBER COMPRESSION, INFLATABLE, OR ANY OTHER METHOD APPROVED BY THE DISTRICT'S INSPECTOR.



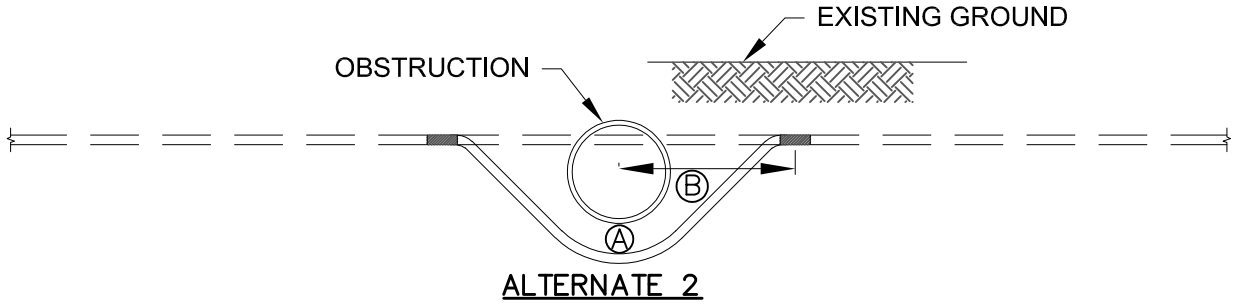
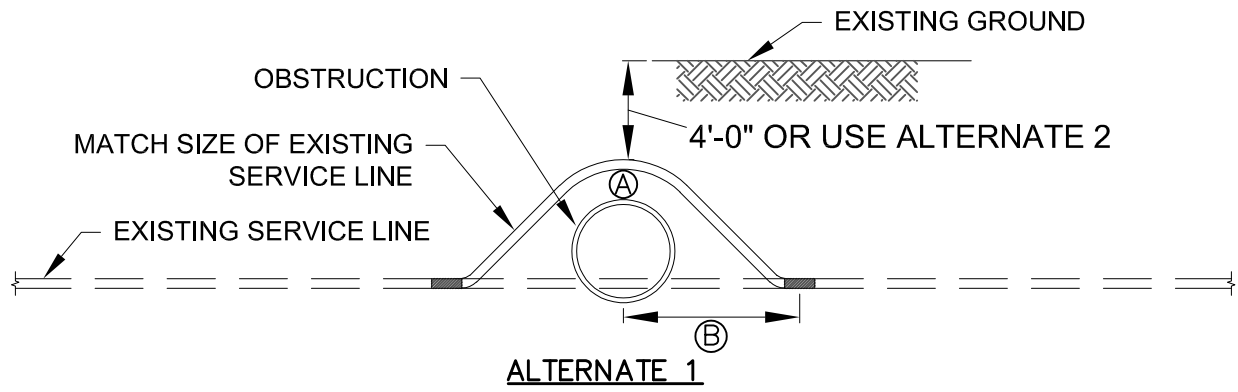
PIPE SIZE	MIN. TRENCH WIDTH	MAX. TRENCH WIDTH
6"	2'-1"	2'-7"
8"	2'-3"	2'-9"
10"	2'-5"	2'-11"
12"	2'-8"	3'-2"
16"	3'-0"	3'-6"



8885 WEST 3500 SOUTH  
MAGNA, UTAH, 84044  
801-250-2118

**SEWER, CULINARY & SECONDARY  
PIPE TRENCH CROSS SECTION**

DEPARTMENT	
<b>ENGINEERING</b>	
STANDARD DETAIL	REVISION
<b>25</b>	<b>JULY 2020</b>



**TYPE A - WATER SERVICE LINE**

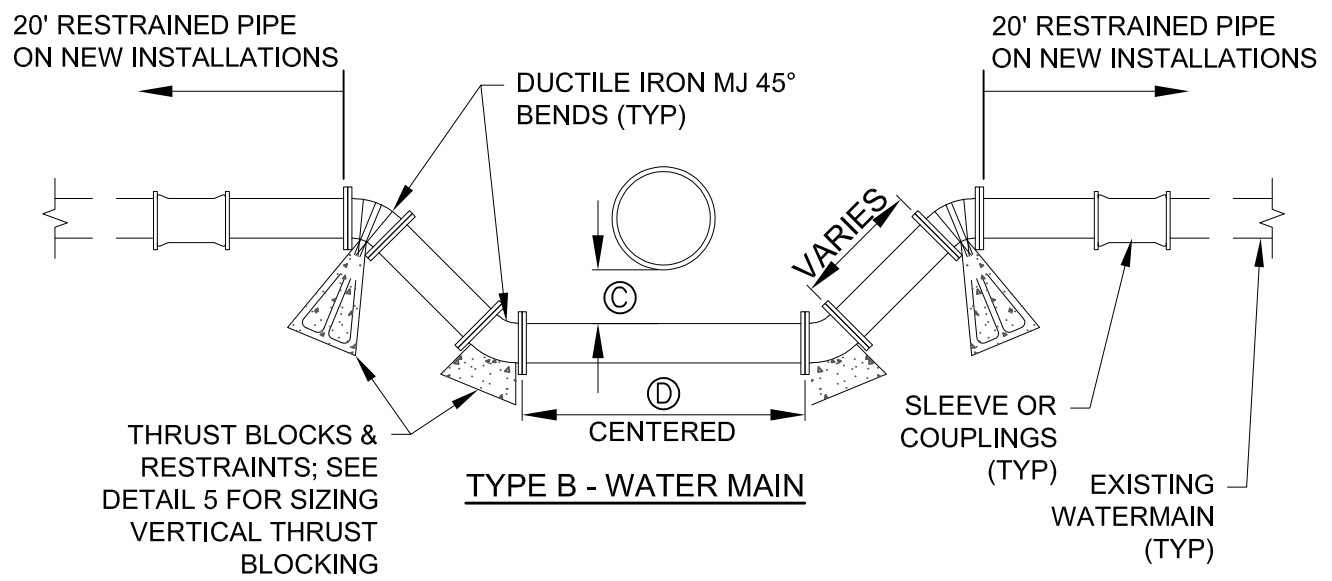


TABLE OF DIMENSIONS		
NO.	OBSTRUCTION	
	SEWER MAIN	OTHER
(A)	18"	2"
(B)	10'-0"	6"
(C)	18"	12" MIN.
(D)	FULL PIPE LENGTH	O.D. + 12"



8885 WEST 3500 SOUTH  
MAGNA, UTAH, 84044  
801-250-2118

**PIPELINE LOOP**

DEPARTMENT	
<b>ENGINEERING</b>	
STANDARD DETAIL	REVISION
<b>26</b>	<b>JULY 2020</b>